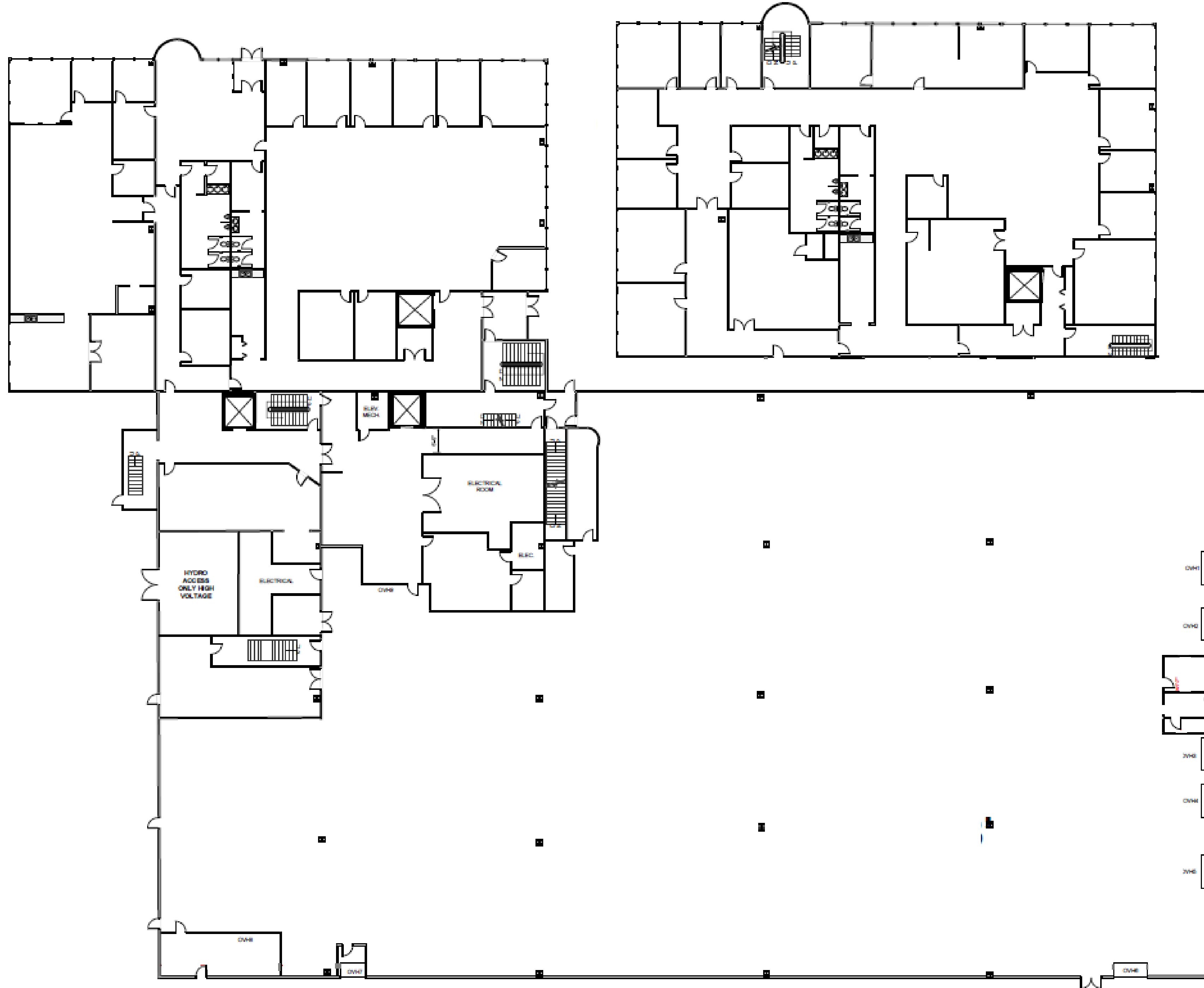




## 1<sup>ST</sup> FLOOR

## 2<sup>ND</sup> FLOOR



## BUILDING SPECS

Stage:	33,000 sq.ft.
Office Space:	18,000 sq.ft.
Costume & Wardrobe	5,000 sq.ft.
Support Space:	12,000 sq.ft.

**Total Space: 68,000 sq.ft.**

## HIGHLIGHTS

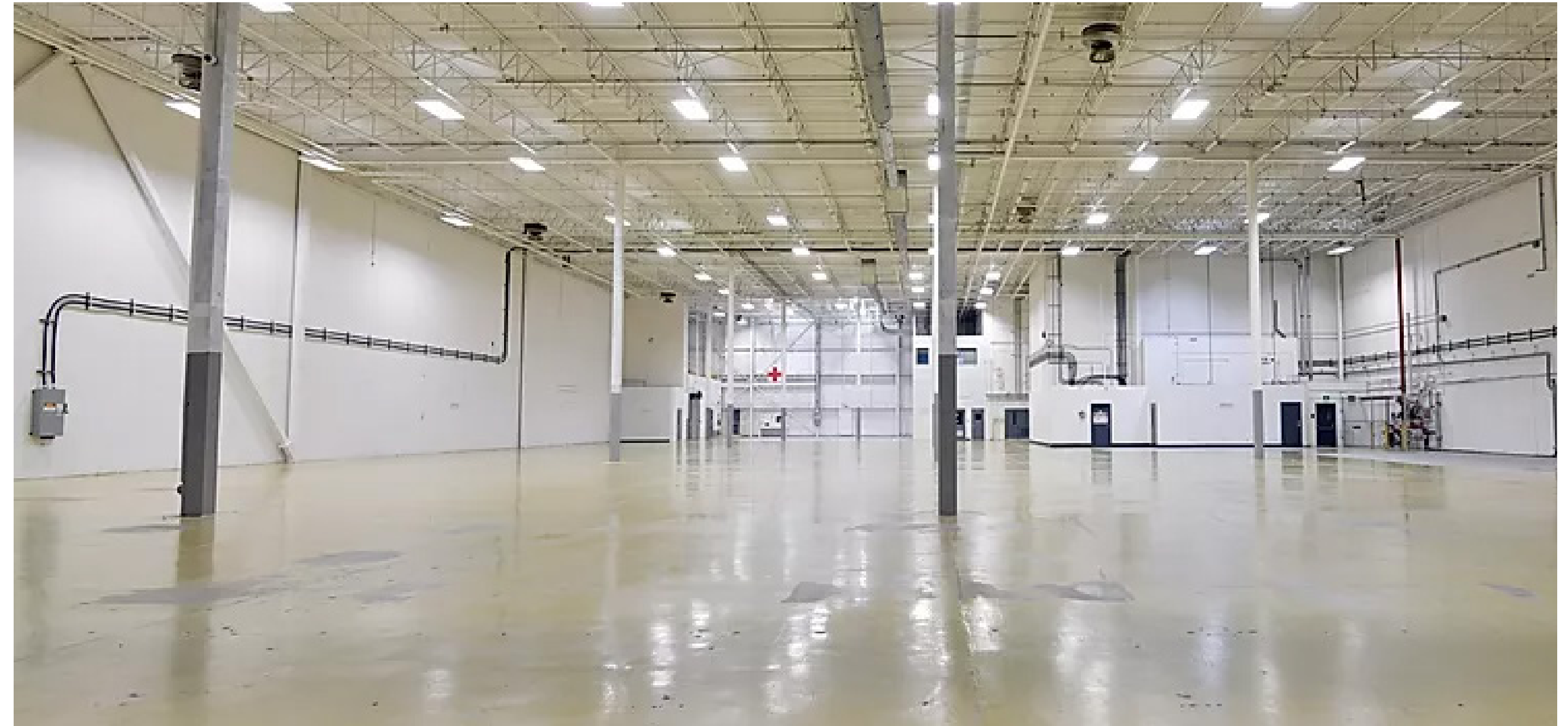
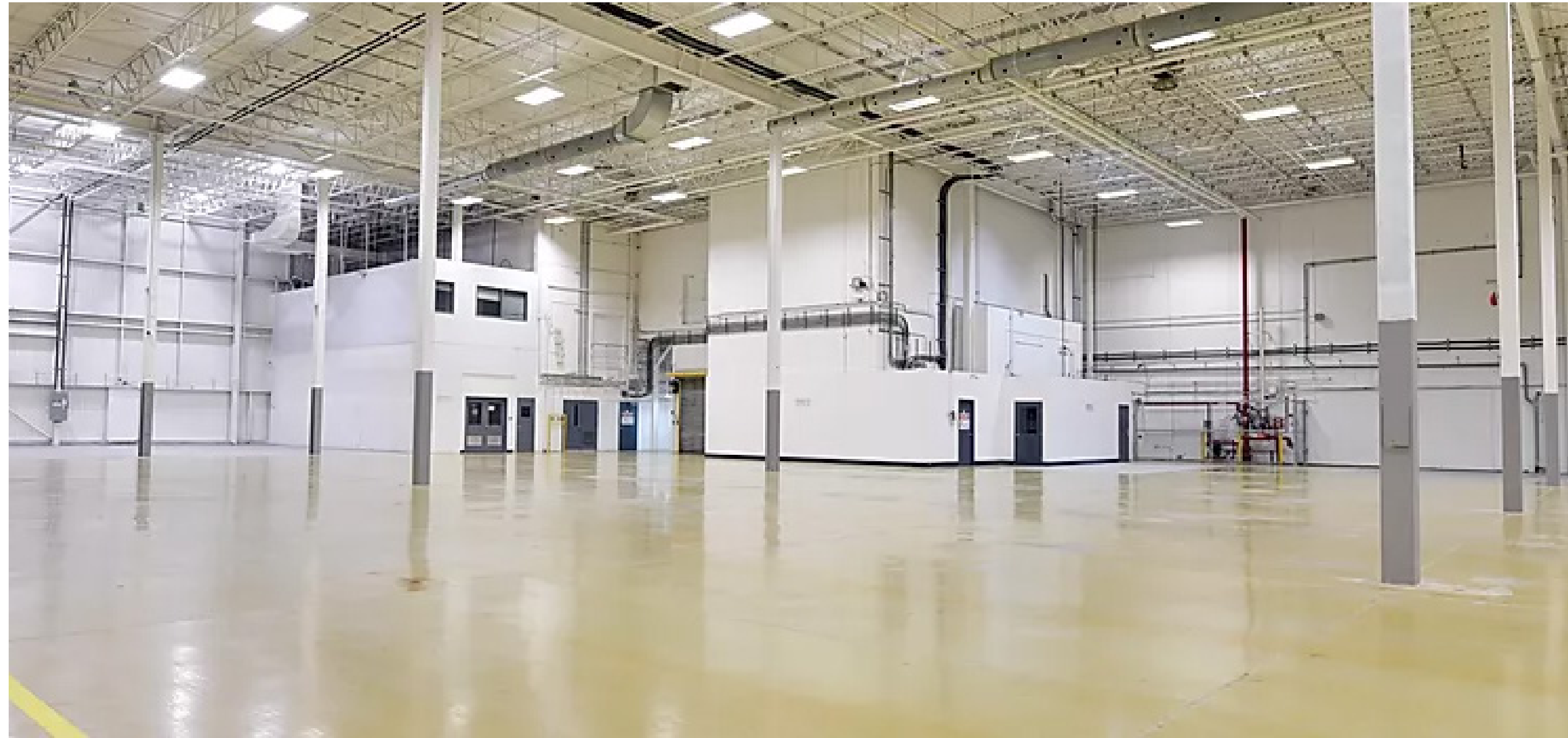
- Professional wardrobe breakdown spray booth & dye pot burners
- Full Laundry Facilities
- 7 First Aid / Eye Wash stations
- Green rooms, Client lounges, and Dressing rooms
- Production offices with IP phones
- Lunch room and serving room
- Kitchens on both office levels, complete with fridges and dishwashers
- Large art department
- Set decoration and props lockups available

## CENTURY STUDIO

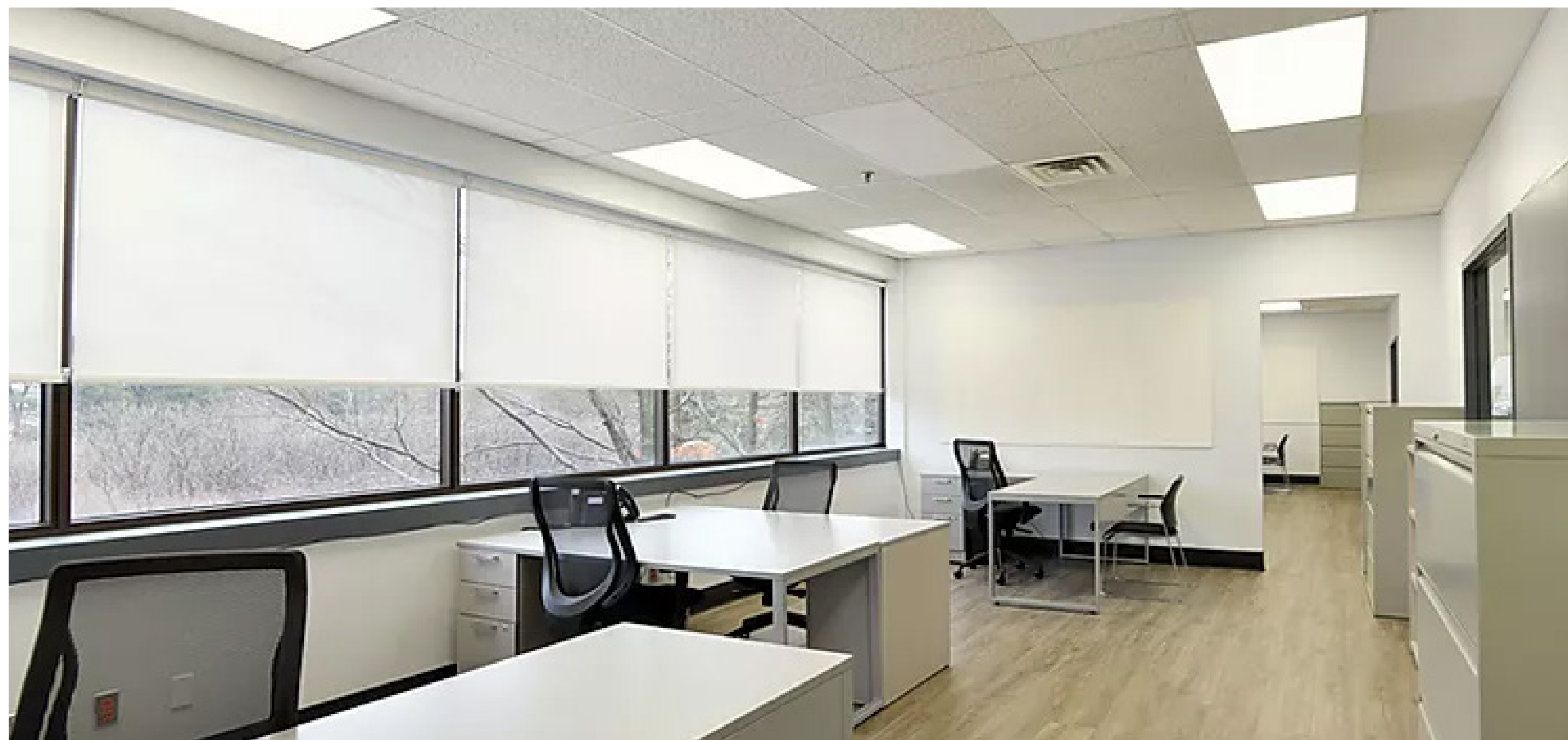
7030 Century Avenue,  
Mississauga, ON



## STAGE



## OFFICE SPACE



## COSTUME & WARDROBE



## CENTURY STUDIO

7030 Century Avenue,  
Mississauga, ON



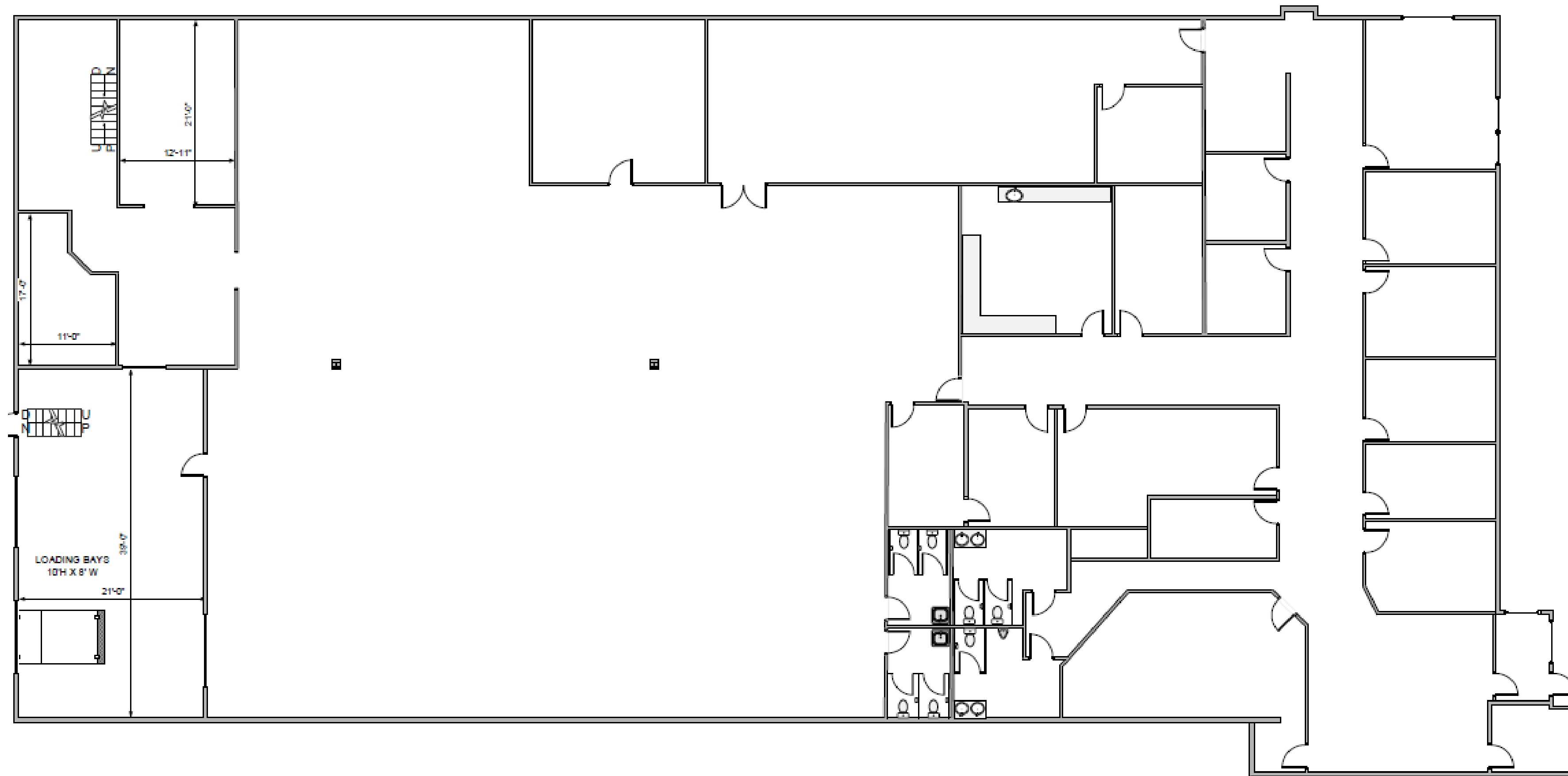
## BUILDING SPECS

Mill/Paint: 8,000 sq.ft.  
Office Support Space: 5,500 sq.ft.

**Total Space: 13,500 sq.ft.**

## HIGHLIGHTS

- 15 offices with a large boardroom
- Double loading bay doors
- Heating and Ventilation
- 24/7 Security
- Kitchen



## MILLCREEK SUPPORT

6705 Millcreek Drive,  
Mississauga, ON





## MILL/PAIN



## OFFICE SUPPORT SPACE



## MILLCREEK SUPPORT

6705 Millcreek Drive,  
Mississauga, ON