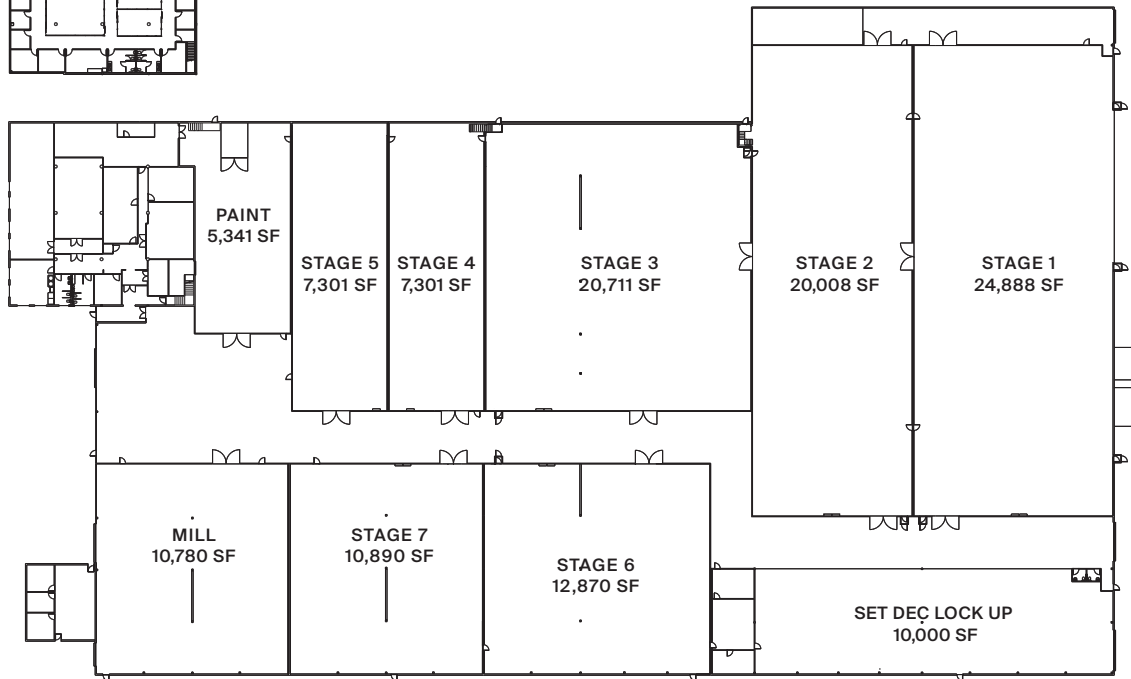
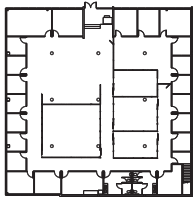




LOWER OFFICES
8,355 SF



BUILDING SPECS

Stage 1 :	24,888 sq.ft.
Stage 2:	20,008 sq.ft.
Stage 3:	20,711 sq.ft.
Stage 4:	7,301 sq.ft.
Stage 5:	7,301 sq.ft.
Stage 6:	12,870 sq.ft.
Stage 7:	10,890 sq.ft.

Total Stage: 103,969 sq.ft.

Main Offices (2nd floor):	8,355 sq.ft.
Lower Offices:	8,355 sq.ft.
Paint:	5,341 sq.ft.
Mill:	10,780 sq.ft.
Classroom:	1,500 sq.ft.
Set Dec Lock Up:	10,000 sq.ft.

Total Support Space: 44,331 sq.ft.

Total Facility Space: *177,000 sq.ft.

*Including common and facility areas.

IRONWOOD

888 SE Marine Drive,
Vancouver, BC