

STUDIOS



STUDIOS THAT MATCH YOUR AMBITION.

If you're looking for a studio to shoot your next project in, we've got your back.

William F. White International Inc. operates state-of-the-art studios in the Vancouver and Toronto area that can handle any size of production. With 32 sound stages and ample mixed-use high-ceiling warehouse space spread across our nine facilities, WFW Studios has over 1,070,000 square feet of production-ready space.






Our studios offer strategic locations featuring support areas and workshops within the facilities as well as ample crew and base camp parking. Individual studios are equipped with various technical amenities such as the latest in fibre-optic connectivity, creating a modern and comfortable turnkey work environment.

Our other services including camera, lighting, grip, location support and specialty equipment are also within short driving distances of each studio facility.

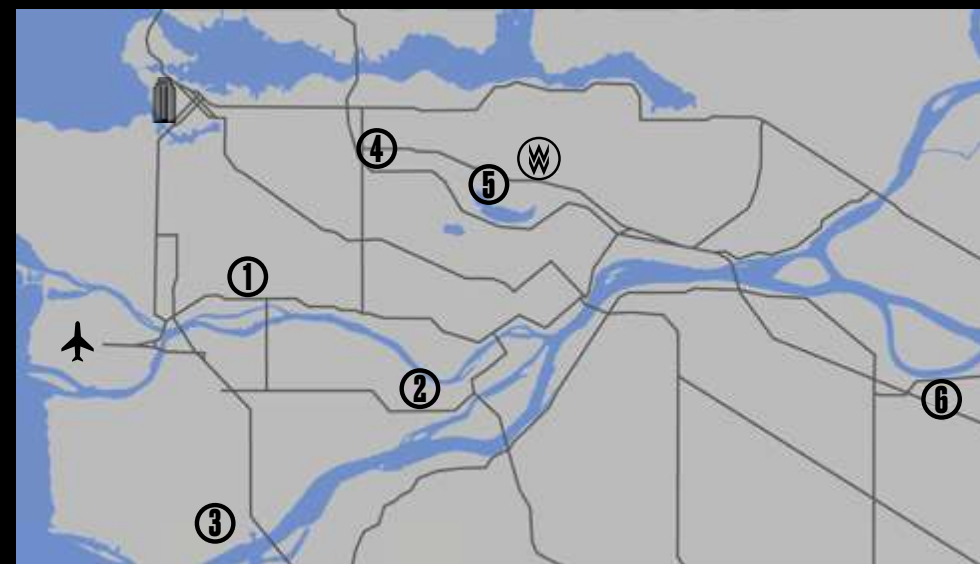










TORONTO

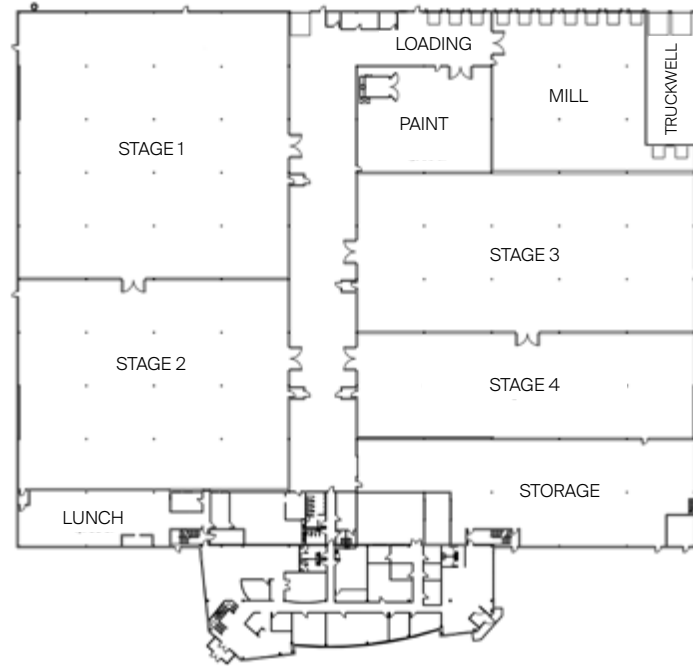


-  Downtown Toronto
-  William F. White International Inc.
-  Edwards Blvd. Studios
-  Cantay Studios NEW
-  Century Studios NEW

VANCOUVER



-  Downtown Vancouver
-  William F. White International Inc.
-  Ironwood Studios
-  Fraserwood Studios
-  Copperwood Studios
-  Creekwood Studios
-  Lakewood Flex Space
-  Riverwood Flex Space



6115 Edwards Boulevard,
Mississauga, ON

- Stage 1:** 24,800 sq. ft. (160' x 155')
- Stage 2:** 20,000 sq. ft. (160' x 125')
- Stage 3:** 18,400 sq. ft. (198' x 93')
- Stage 4:** 12,400 sq. ft. (198' x 63')
- Mill:** 11,100 sq. ft.
- Paint:** 4,900 sq. ft.
- Production offices:** 21,545 sq. ft.
- Storage:** 10,240 sq. ft.
- Lunch:** 4,700 sq. ft.

EDWARDS BLVD.

Edwards Blvd. is our first facility located in the Toronto area. The studio offers 151,130 square feet of production-ready space, with 28-foot clear height throughout the building.

Edwards Blvd. houses four sound stages as well as a mill shop, paint shop, two floors of departmental offices and ample storage space.



CANTAY NEW

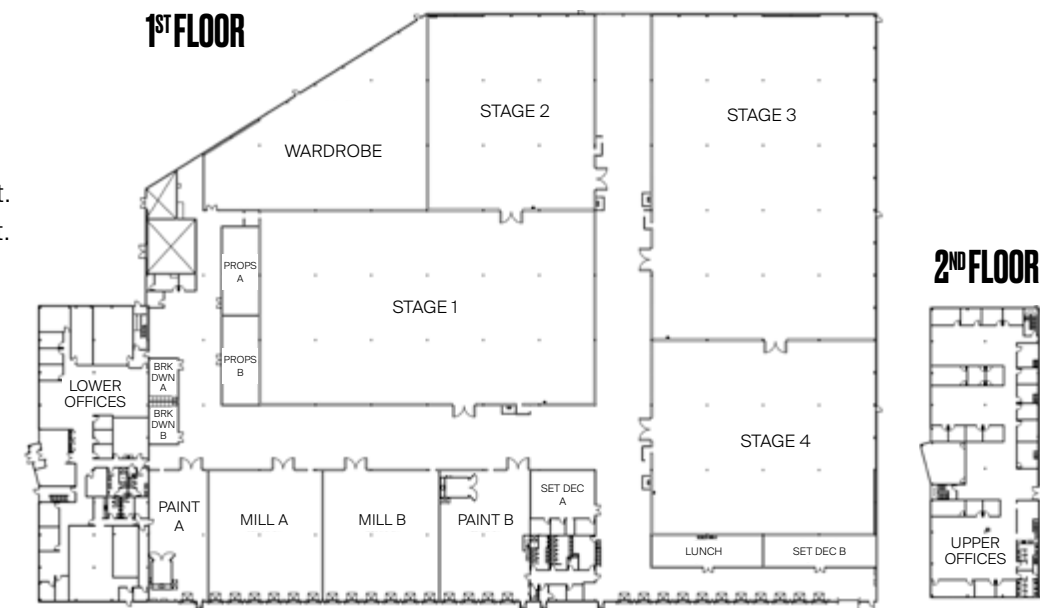
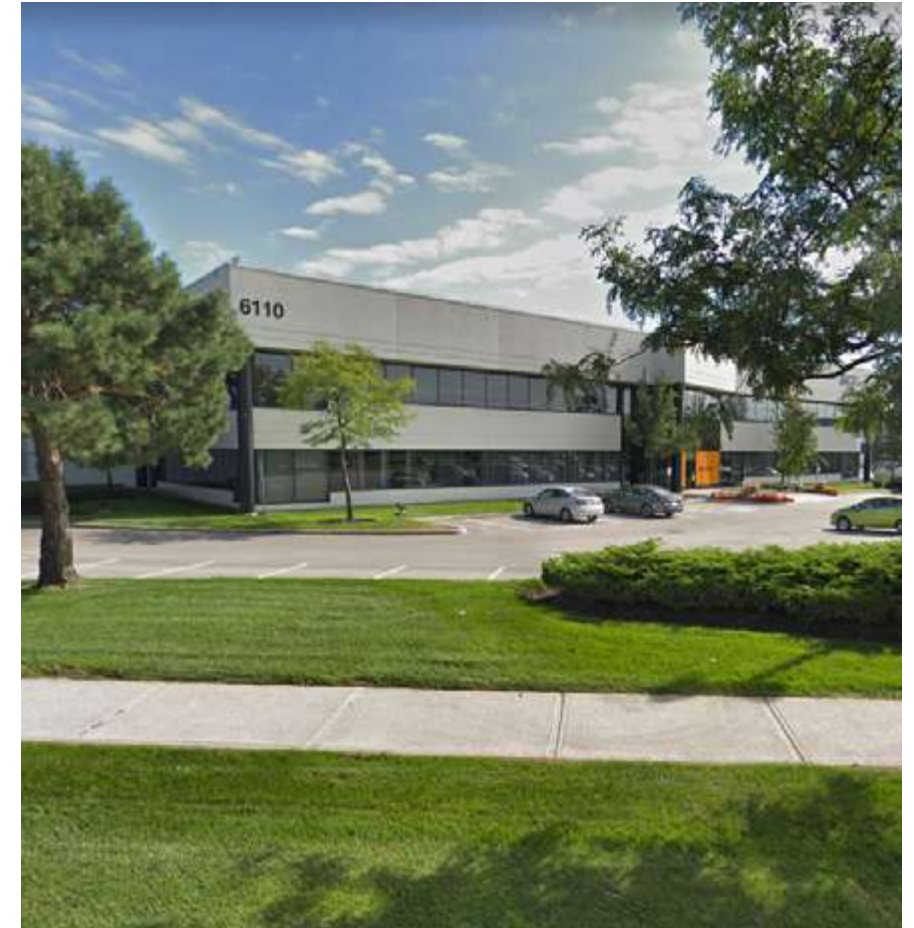
The newest Toronto Cantay Studio provides clients with a 181,000 square-foot facility complete with four stages, two offices and double the construction space for wardrobe, set dec, props, paint, mill and lock-ups. Cantay will be available for occupancy early 2021.

6110 Cantay Rd,
Mississauga, ON

- Stage 1:** 24,840 sq. ft.
- Stage 2:** 12,558 sq. ft.
- Stage 3:** 27,364 sq. ft.
- Stage 4:** 16,160 sq. ft.

- 1st Floor Offices:** 12,500 sq. ft.
- 2nd Floor Offices:** 12,500 sq. ft.
- Lunch:** 1,317 sq. ft.

- Wardrobe:** 9,196 sq. ft.
- Set Dec A:** 1,155 sq. ft.
- Set Dec B:** 1,317 sq. ft.
- Props A:** 1,226 sq. ft.
- Props B:** 1,226 sq. ft.
- Paint A:** 2,800 sq. ft.
- Paint B:** 4,390 sq. ft.
- Mill A:** 5,600 sq. ft.
- Mill B:** 5,600 sq. ft.
- Break Down A:** 450 sq. ft.
- Break Down B:** 450 sq. ft.



CENTURY NEW

The newest Toronto Century Studio location offers clients 68,000 square-feet with a large art department, set dec and prop lockups, green rooms, client lounges and dressing rooms. It features 24/7 security, double loading bay doors, heating and ventilation and more.

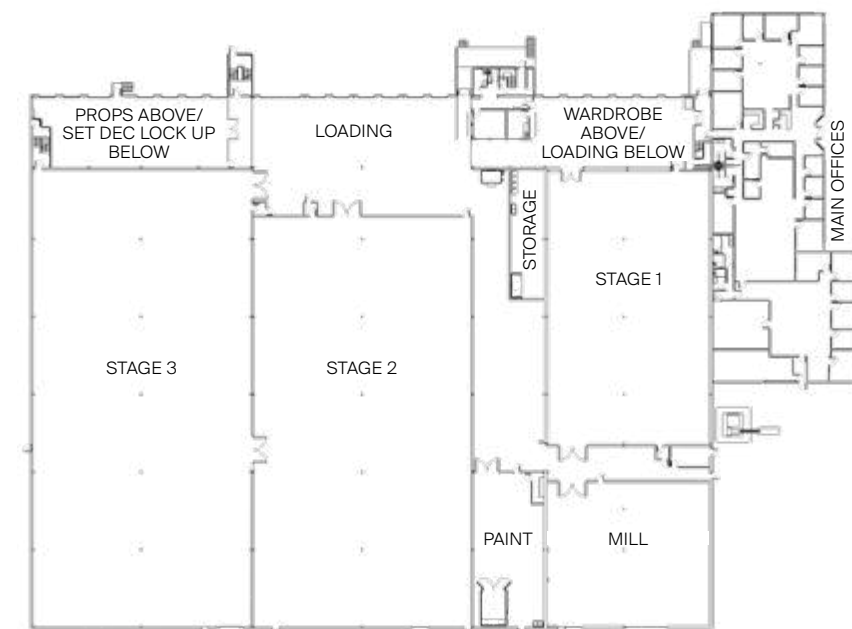
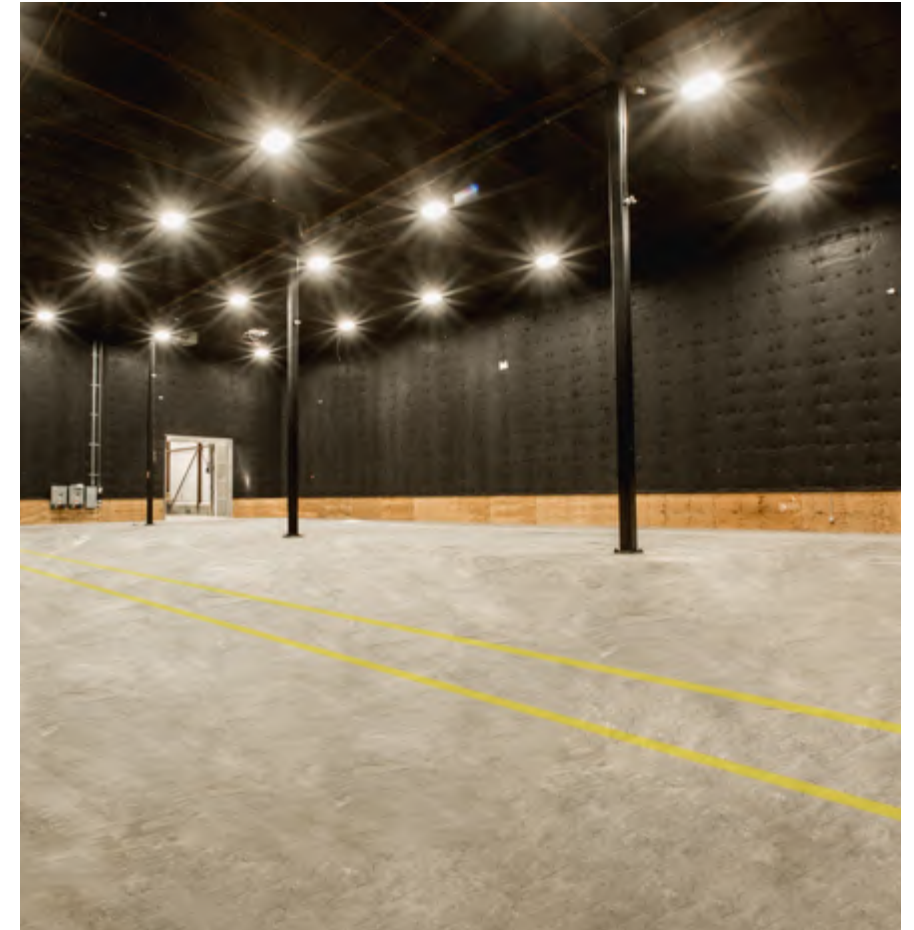


7030 Century Avenue
Mississauga, ON L5N 2V8

Stage: 33,000 sq. ft.
Office Space: 18,000 sq. ft.
Costume & Wardrobe: 5,000 sq. ft.
Support Space: 12,000 sq. ft.

COPPERWOOD

Copperwood Studios is a 106,000 square-foot premium, 31-foot clear height, full-service facility located in Richmond. The space provides clients with three large engineered sound stages, a mill shop and paint shop, additional support space, along with ample circus and crew parking. All offices are equipped with fibre-optic services and are fully furnished, providing a modern and comfortable turnkey work environment.

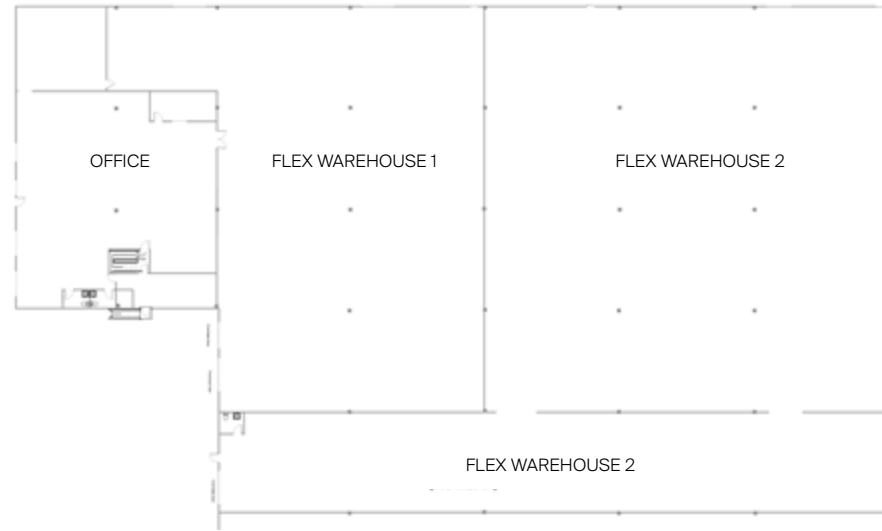


12211 Horseshoe Way,
Richmond, BC

Stage 1: 10,140 sq. ft. (130' x 78')
Stage 2: 21,525 sq. ft. (205' x 105')
Stage 3: 23,415 sq. ft. (223' x 105')
Mill: 5,800 sq. ft.
Paint: 2,800 sq. ft.
Production offices: 11,580 sq. ft.
Wardrobe: 3,977 sq. ft.
Props: 3,977 sq. ft.
Set dec lock-up: 3,977 sq. ft.

3819 Still Creek Ave,
Burnaby, BC

- Flex 1:** 10,320 sq. ft. (86' x 120')
- Flex 2:** 14,400 sq. ft. (120' x 120')
- Flex 3:** 5,920 sq. ft. (198' x 29'8")
- Office:** 5,631 sq. ft.



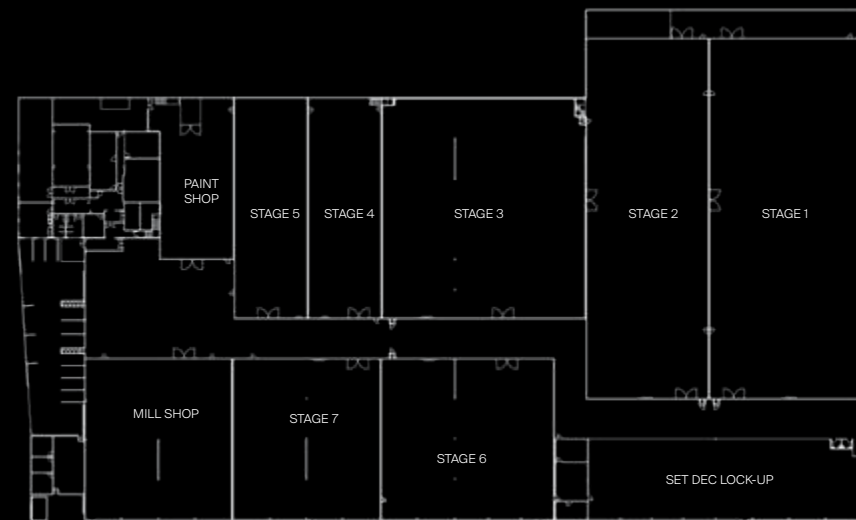
CREEKWOOD

Creekwood Studios location is a 36,000 square-foot multipurpose flex space with over 5,500 square-foot of office space and 23' clear ceiling height in the warehouse.

This property features 3 dock doors (2 docks and one drive up), 22 designated parking stalls with access to additional parking, and is a 40 minute drive to YVR International Airport and only 15 minutes to William F. White International.

IRONWOOD

Across 177,000 square feet of production-ready space, WFW Studios Ironwood boasts ceilings of 27 to 31 feet clear height throughout the facility. Ironwood has seven sound stages as well as a mill shop, a paint shop, departmental offices, boardrooms and script-reading rooms. Ironwood's fully furnished production offices come equipped with 10 GB fibre-optic service. In addition, our sound stages are equipped with state-of-the-art fibre that complements motion capture and VR systems.

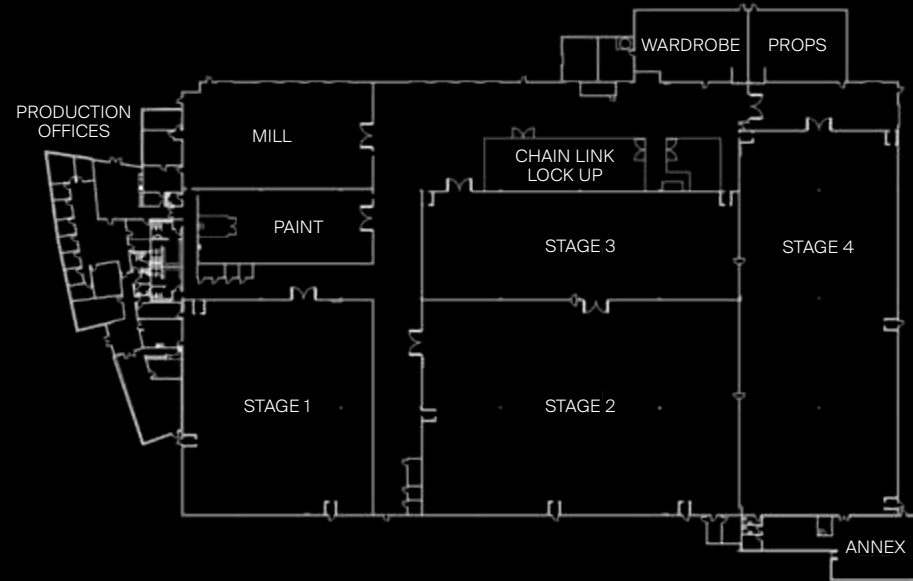


888 SE Marine Drive,
Vancouver, BC

- Stage 1:** 24,888 sq. ft. (244' x 102')
- Stage 2:** 20,008 sq. ft. (244' x 82')
- Stage 3:** 20,711 sq. ft. (149' x 139')
- Stage 4:** 7,301 sq. ft. (49' x 149')
- Stage 5:** 7,301 sq. ft. (49' x 149')
- Stage 6:** 12,870 sq. ft. (110' x 117')
- Stage 7:** 10,890 sq. ft. (110' x 99')
- Mill shop:** 10,670 sq. ft. (97' x 110')
- Paint shop:** 5,341 sq. ft. (49' x 109')
- Main offices (2nd floor):** 8,355 sq. ft.
- Lower offices:** 8,355 sq. ft.
- Classroom:** 1,500 sq. ft.
- Set dec lock-up:** 10,000 sq. ft.

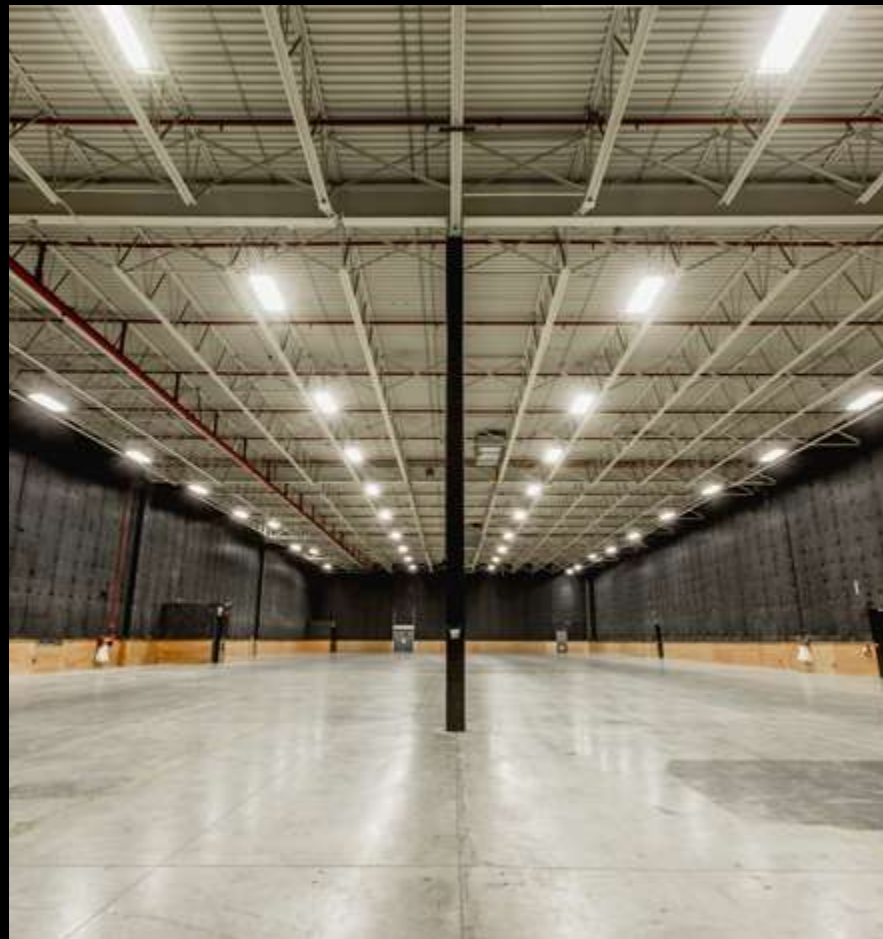
FRASERWOOD

WFW Studios Fraserwood offers 25-foot clear height ceilings with four sound stages, a mill shop, a paint shop and additional support areas across 119,000 square feet of production-ready space. The studio is located 30 minutes from downtown. Fully furnished production offices with fibre-optic connectivity make for a modern turnkey work environment.



22031 Fraserwood Way,
Richmond, BC

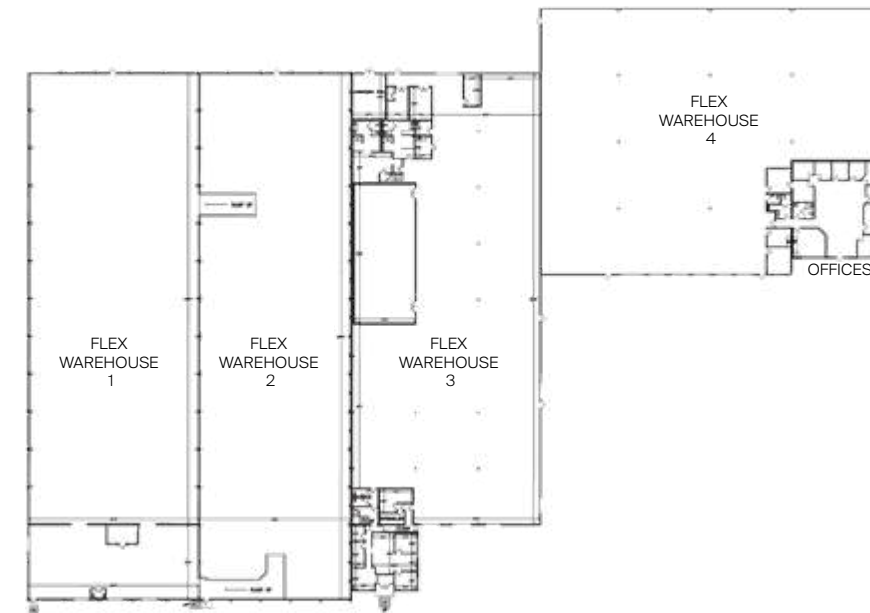
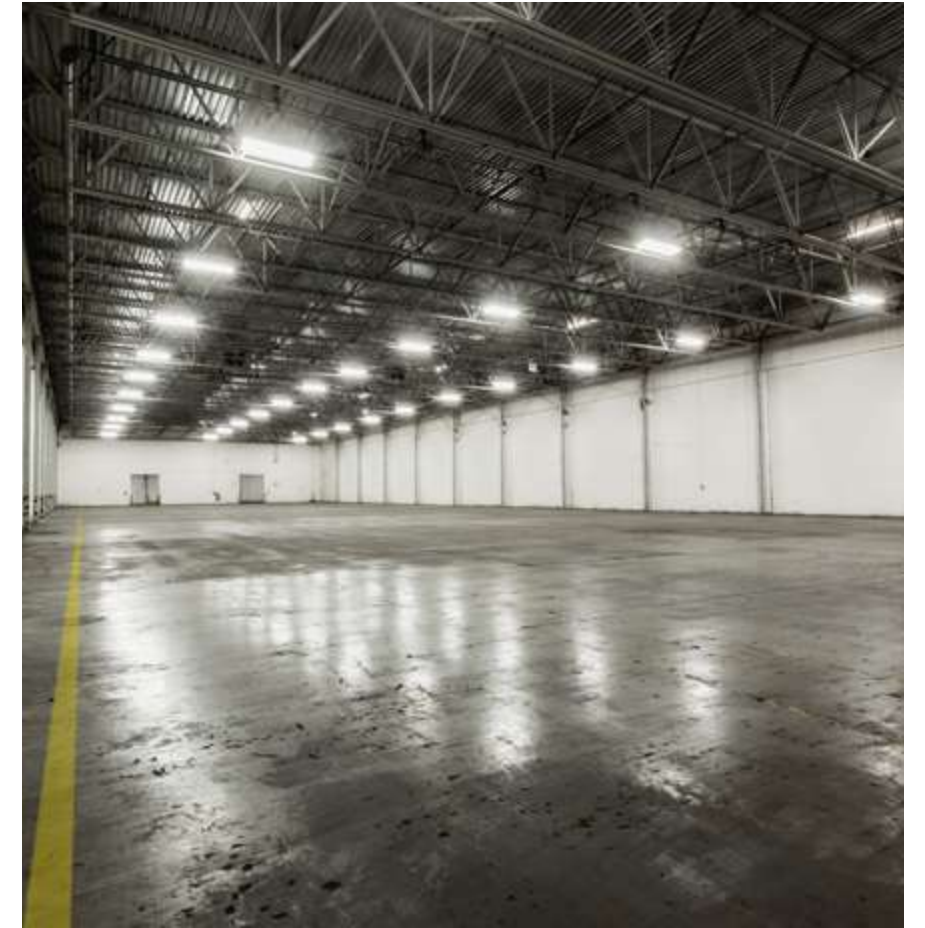
- Stage 1:** 14,760 sq. ft. (120' x 123')
- Stage 2:** 22,263 sq. ft. (181' x 123')
- Stage 3:** 10,860 sq. ft. (181' x 60')
- Stage 4:** 20,700 sq. ft. (90' x 230')
- Mill:** 7,200 sq. ft.
- Paint:** 5,200 sq. ft.
- Production offices:** 9,200 sq. ft.
- Annex:** 3,200 sq. ft.
- Wardrobe:** 2,600 sq. ft.
- Props:** 2,350 sq. ft.
- Chain link lock-up:** 4,420 sq. ft.



3690 Bainbridge Ave,
Burnaby, BC

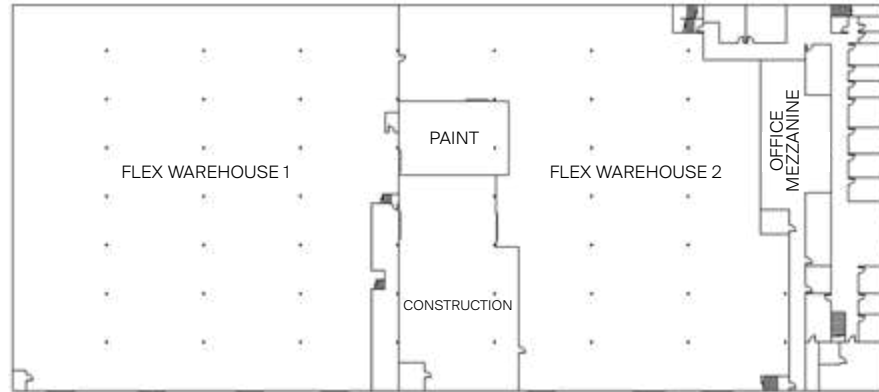
- Flex warehouse 1:** 25,330 sq. ft.
- Flex warehouse 2:** 23,139 sq. ft.
- Flex warehouse 3:** 24,633 sq. ft.
- Flex warehouse 4:** 21,864 sq. ft.
- Offices:** 3,303 sq. ft.

The above figures represent the dimensions of each warehouse at its widest point.



LAKWOOD

WFW Studios Lakewood provides clients with a 99,750 square-foot facility complete with four warehouse flex spaces with clear heights ranging from 21 to 24 feet. The location also includes private offices, a boardroom and a kitchenette.



RIVERWOOD

Riverwood Studios presents clients with a 97,430 square-foot facility complete with two 20-foot clear height warehouse flex spaces. The building also includes an office mezzanine, as well as paint and construction workspaces.

18788 96 Ave,
Surrey, BC

Flex warehouse 1: 39,500 sq. ft.
Flex warehouse 2: 38,100 sq. ft.
Paint: 2,100 sq. ft.
Construction: 6,100 sq. ft.
Office mezzanine: 12,000 sq. ft.



WE'VE GOT ALL YOUR BASES COVERED

For more than 57 years, William F. White International Inc. has equipped Canadian film and television productions with the most comprehensive and technologically advanced rental inventory in the country.

As Canada's only national equipment provider, we're committed to supporting productions of all kinds: tentpole studio feature films, experimental proof-of-concept web shorts and everything in between.

From state-of-the-art studio spaces to the latest cameras, specialty equipment, lighting, grip, expendables and location support, we maintain all our rentals to the highest possible standards. And we make sure you get what you need, when you need it, with six rental facilities strategically located across the country. WFW Studios also offers management and consulting packages for bundling our services and studio buildouts.

Talk with us today or visit us online at whites.com to see how we can be your partners in production the next time you film in Canada.

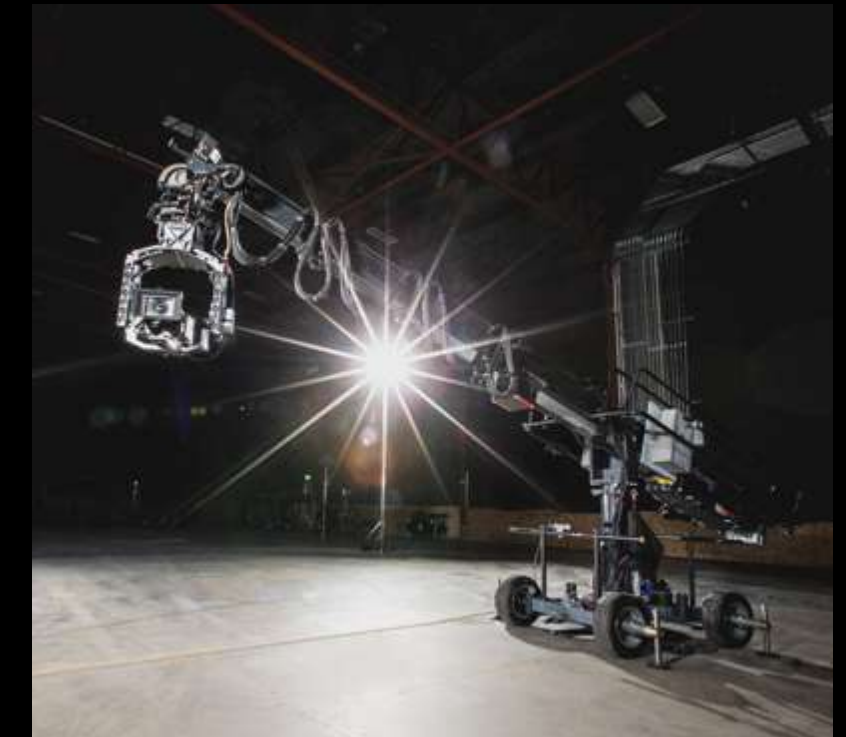
Provided services:

**LIGHTING
& GRIP**

CAMERA

**SPECIALTY
EQUIPMENT**

**LOCATION
EQUIPMENT
SUPPLY**



DROP BY AND SAY HELLO.

Find us in six locations across Canada.

VANCOUVER

100-8363 Lougheed Highway
Burnaby, BC V5A 1X3

Hours: Mon-Fri, 8am-5pm PT

Tel: +1 604 253 5050

After-hours Emergencies: +1 604 838 2747

Randall Plitt: rplitt@whites.com

Specialty Equipment—Western Canada

3555 Bainbridge Avenue

Burnaby, BC V5A 2T3

Hours: Mon-Fri, 8am-5pm PT

Tel: +1 604 428 2144

Barrie Wells: bwells@whites.com

LES Vancouver

3975 Kitchener Street

Burnaby, BC V5C 3L9

Hours: Mon-Fri, 8am-7pm PT

Tel: +1 604 436 1418

Fax: +1 604 436 1461

Email: wlesvancouver@whites.com

Jason Cox: jcox@whites.com

CALGARY

Calgary Film Centre

5750 76th Avenue SE, Unit 50

Calgary, AB T2C 5N5

Hours: Mon-Fri, 8am-5pm MT

Tel: +1 403 279 2693

Sean Toner: seant@whites.com

WINNIPEG

11-2073 Logan Avenue

Winnipeg, MB R2R 0J1

Hours: Mon-Fri, 8am-5pm CT

Tel: +1 204 774 7903

Craig Aftanas: caftanas@whites.com

SUDBURY

922 Cambrian Heights Drive, Unit 2

Sudbury, ON P3C 5L8

Hours: Mon-Fri, 8am-5pm ET

Tel: +1 705 885 1242

Josh Desormeaux: jdesormeaux@whites.com

TORONTO

800 Islington Avenue

Toronto, ON M8Z 6A1

Hours: Mon-Fri, 8am-5pm ET

Tel: +1 416 239 5050

After-hours Emergencies: +1 647 222 0454

Michael Drabot: mdrabot@whites.com

Camera

Hours: Mon-Fri, 8am-6pm ET

After-hours Emergencies: +1 416 522 4285

Trevor Huys: thuys@whites.com

LES Toronto

Hours: Mon-Fri, 7:30am-5:30pm ET

Tel: +1 416 410 5858

Email: wlestoronto@whites.com

Paul Potvin: ppotvin@whites.com

The Store @ WFW (Expendables)

Hours: Mon-Fri, 8am-5pm ET

thestore@whites.com

HALIFAX

180 Thornhill Drive, Unit 3

Dartmouth, NS B3B 1V3

Hours: Mon-Fri, 8am-5pm AT

Tel: +1 902 450 1284

Trevor Sutherland: tsutherland@whites.com

whites.com

whitesstudios.com

whitesles.com

