

# STUDIOS



# STUDIOS THAT MATCH YOUR AMBITION.

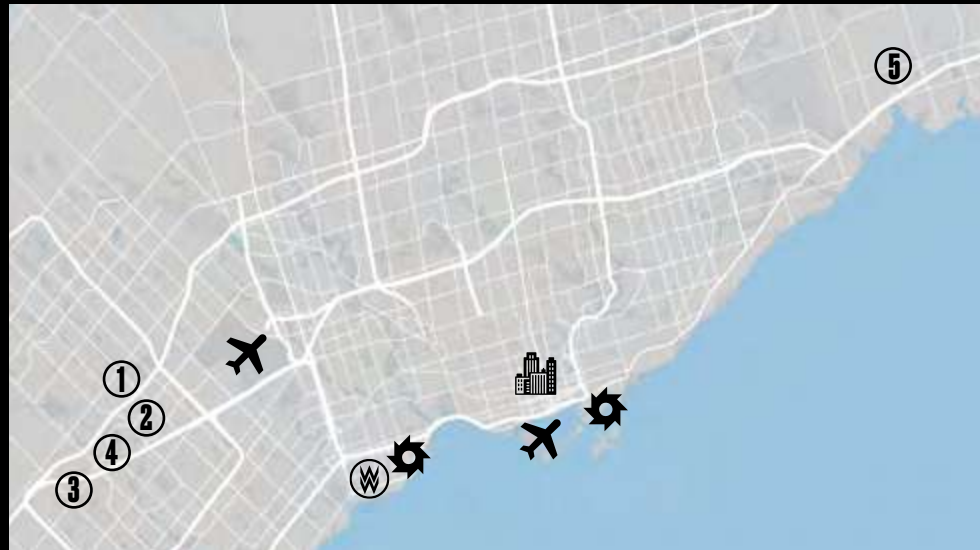
WFW operates a growing portfolio of state-of-the-art production studios in the **Vancouver, Calgary, and Toronto area** that can handle projects of any size. With over 30 sound stages and ample mixed-use high-ceiling warehouse space spread across our **twelve studio facilities**, WFW now manages over **1.4 million square feet of production-ready studio space**. In addition to our studio spaces, we recently added a 23-acre Backlot to our roster, complete with 30 storefronts and five interior sets all designed to look like a generic, modern North American town.

Our studios offer strategic locations featuring support areas and workshops within the facilities as well as ample crew and base camp parking. Individual studios are equipped with various technical amenities such as the latest in fibre-optic connectivity, creating a modern and comfortable turnkey work environment. All other WFW services are also within short driving distances of each studio facility.



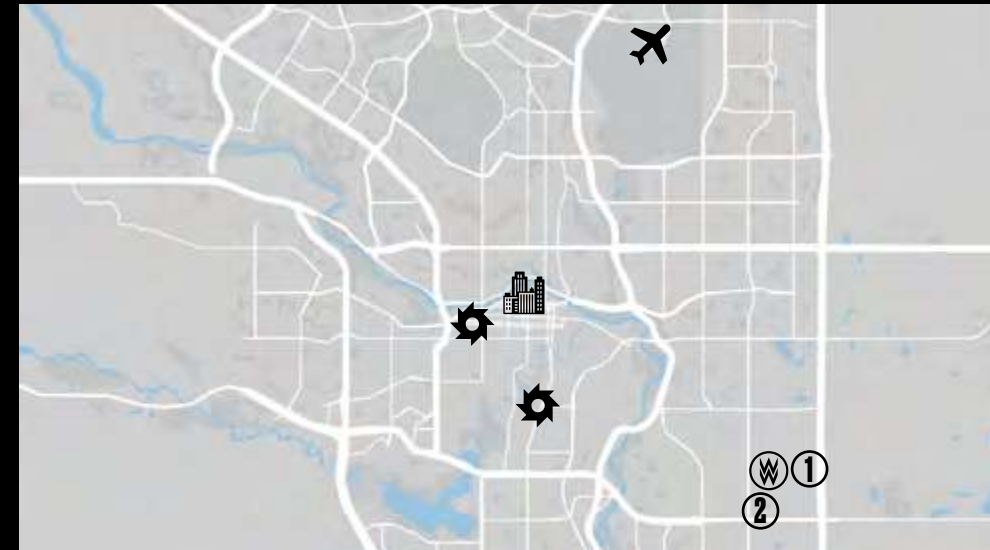


# TORONTO



- William F. White International Inc.
- Downtown Toronto
- Sunbelt Rentals
- Pearson International Airport
- 1** Edwards Blvd. Studio
- 2** Heritage Studio
- 3** Century Studio
- 4** Legacy Studio
- 5** WFW Backlot

# CALGARY



- William F. White International Inc.
- Downtown Calgary
- Sunbelt Rentals
- Calgary International Airport
- 1** Fortress Studio
- 2** Fortress+ Support

# VANCOUVER

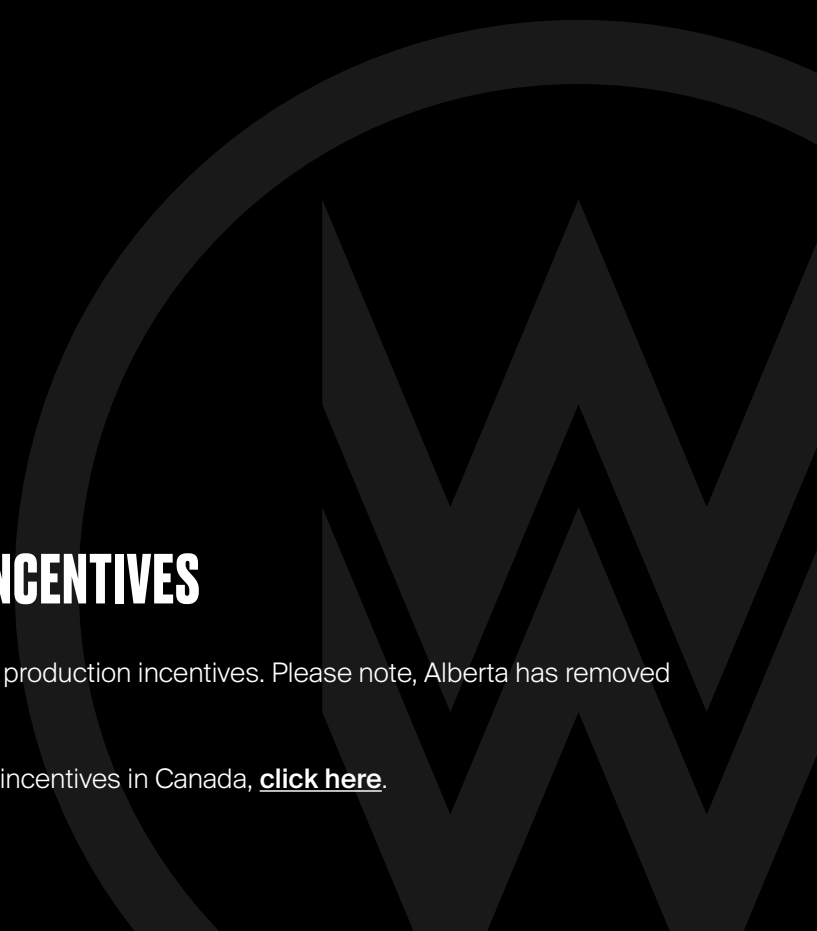


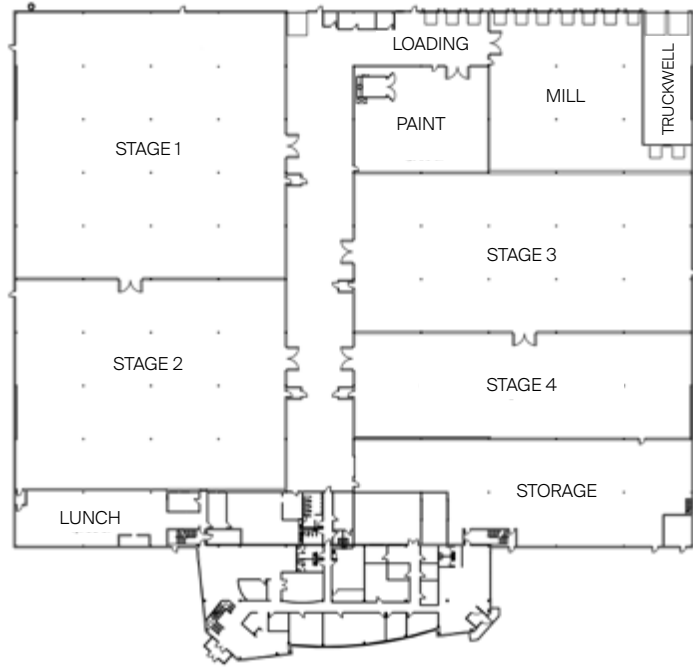
- William F. White International Inc.
- Downtown Vancouver
- Sunbelt Rentals
- Vancouver International Airport
- 1** Ironwood Studio
- 2** Fraserwood Studio
- 3** Copperwood Studio
- 4** Creekwood Flex Space
- 5** Lakewood Flex Space
- 6** Riverwood Flex Space

## CANADIAN PRODUCTION INCENTIVES

Every province in Canada offers their own production incentives. Please note, Alberta has removed its \$10M project cap.

For up-to-date information on production incentives in Canada, [click here](#).





**6115 EDWARDS BOULEVARD,  
MISSISSAUGA, ON**

- Stage 1:** 24,800 sq. ft. (160' x 155')
- Stage 2:** 20,000 sq. ft. (160' x 125')
- Stage 3:** 18,400 sq. ft. (198' x 93')
- Stage 4:** 12,400 sq. ft. (198' x 63')
- Mill:** 11,100 sq. ft.
- Paint:** 4,900 sq. ft.
- Production offices:** 21,545 sq. ft.
- Storage:** 10,240 sq. ft.
- Lunch:** 4,700 sq. ft.



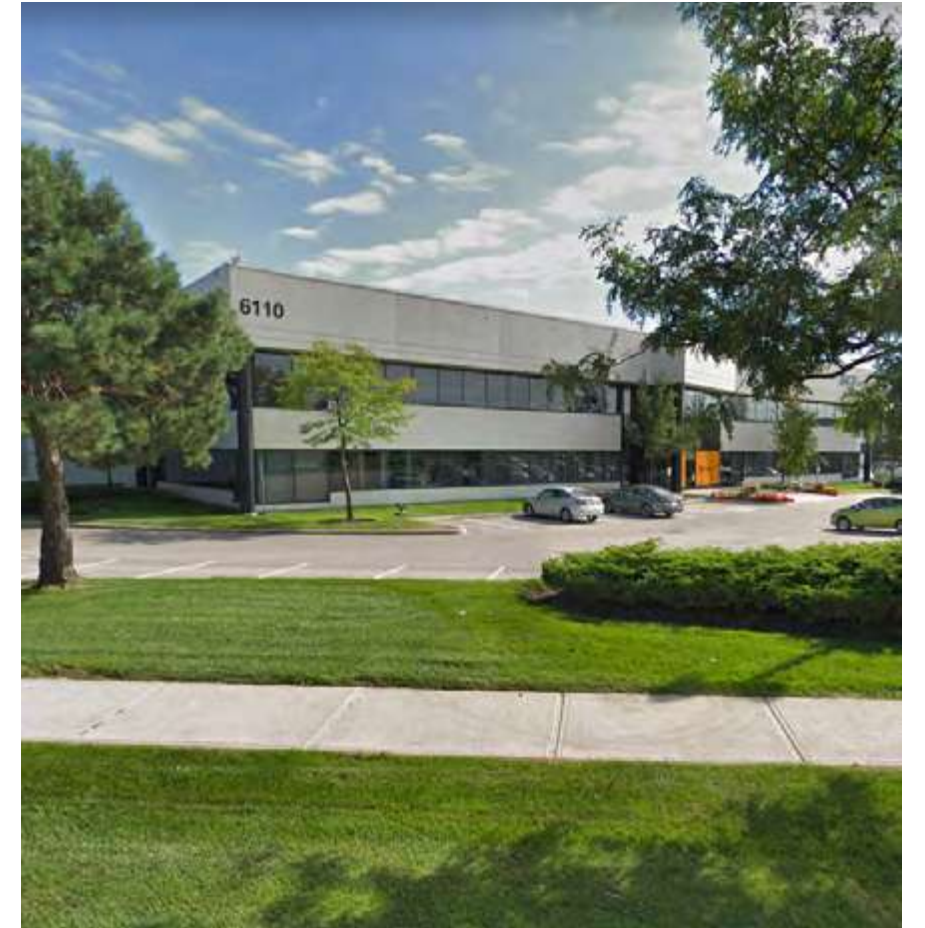
**EDWARDS BLVD.**

Edwards Blvd. Studio offers 151,130 square feet of production-ready space, with 40 feet in column spacing in the stages, and 28 feet clear height throughout the building.

Edwards Blvd. houses four sound stages as well as a mill shop, paint shop, two floors of departmental offices, and ample storage space.

**HERITAGE**

Heritage Studio provides clients with a 181,000 square feet facility complete with four stages, two offices, and double the construction space for wardrobe, set dec, props, paint, mill, and lockups. It has 39 feet in column spacing in the stages, with a ceiling height of 30 feet.

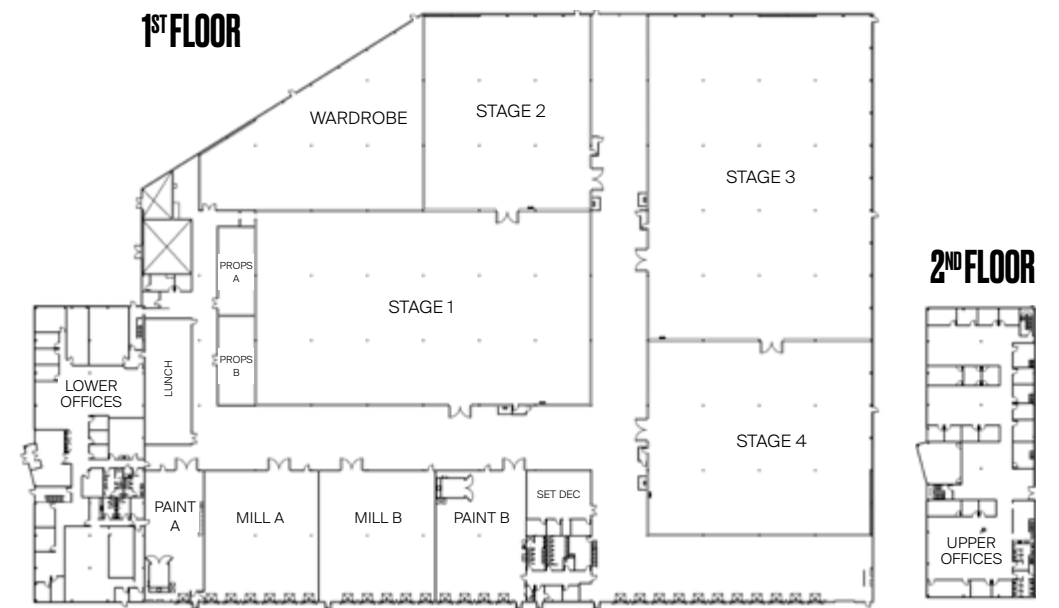


**6110 CANTAY RD,  
MISSISSAUGA, ON**

- Stage 1:** 24,840 sq. ft.
- Stage 2:** 12,558 sq. ft.
- Stage 3:** 27,364 sq. ft.
- Stage 4:** 16,160 sq. ft.

- 1st Floor Offices:** 12,500 sq. ft.
- 2nd Floor Offices:** 12,500 sq. ft.
- Lunch:** 2,200 sq. ft.

- Wardrobe:** 9,196 sq. ft.
- Set Dec:** 1,155 sq. ft.
- Props A:** 1,226 sq. ft.
- Props B:** 1,226 sq. ft.
- Paint A:** 2,800 sq. ft.
- Paint B:** 4,390 sq. ft.
- Mill A:** 5,600 sq. ft.
- Mill B:** 5,600 sq. ft.





# BACKLOT

WFW's latest studio offering and first backlot is located in the City of Pickering, north of downtown Toronto. The 23-acre, modern day small town is situated on a 90-acre plot of land and has been purposefully built for features, TV series and commercials. In addition to the 30 stores and shops currently on the property, the town is easily expandable and can be converted to suit productions of all types, from rustic western settings to bustling New York City streets.

**PICKERING, ON**

**Town:** 23 acres

**Property:** 90 acres

**Property type:** Farmland

**Buildings (interior sets):**

- Diner
- Town Hall
- Town Square
- Gas Station
- Police Station





# CENTURY

Century Studio offers clients 68,000 square feet of production space, with a clear height of 32 feet and 52 feet in column spacing. The facility has a large art department, set dec and prop lockups, green rooms, client lounges, and dressing rooms. It features 24/7 security, double loading bay doors, heating, ventilation, and more.



**7030 CENTURY AVENUE  
 MISSISSAUGA, ON L5N 2V8**

**Stage:** 33,000 sq. ft.  
**Office Space:** 18,000 sq. ft.  
**Costume & Wardrobe:** 5,000 sq. ft.  
**Support Space:** 12,000 sq. ft.

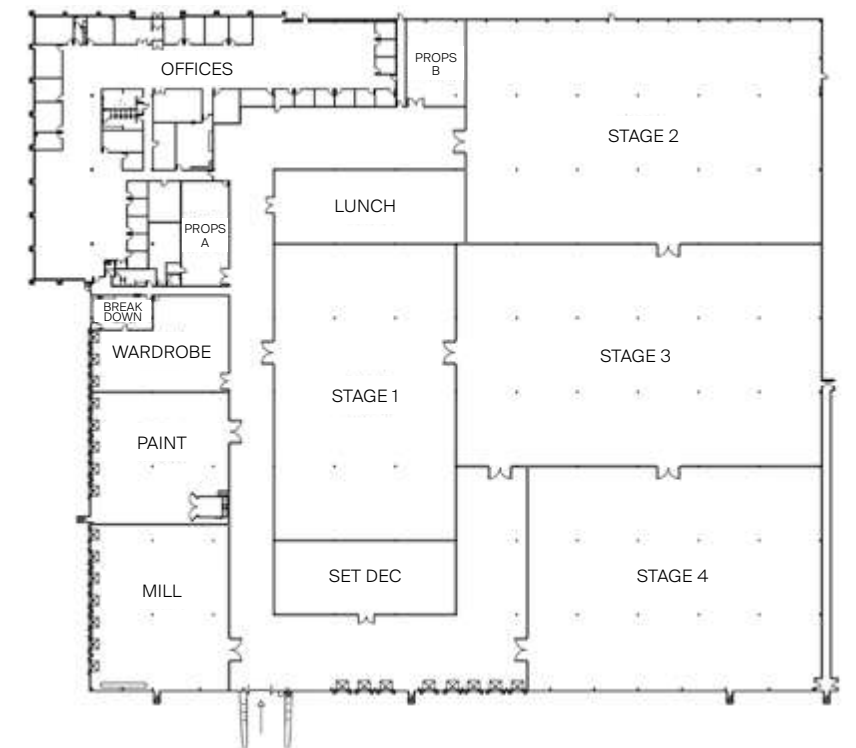
# LEGACY

Legacy Studio is our latest Toronto property due to come online in early 2022.



**6200 CANTAY ROAD,  
 MISSISSAUGA, ON**

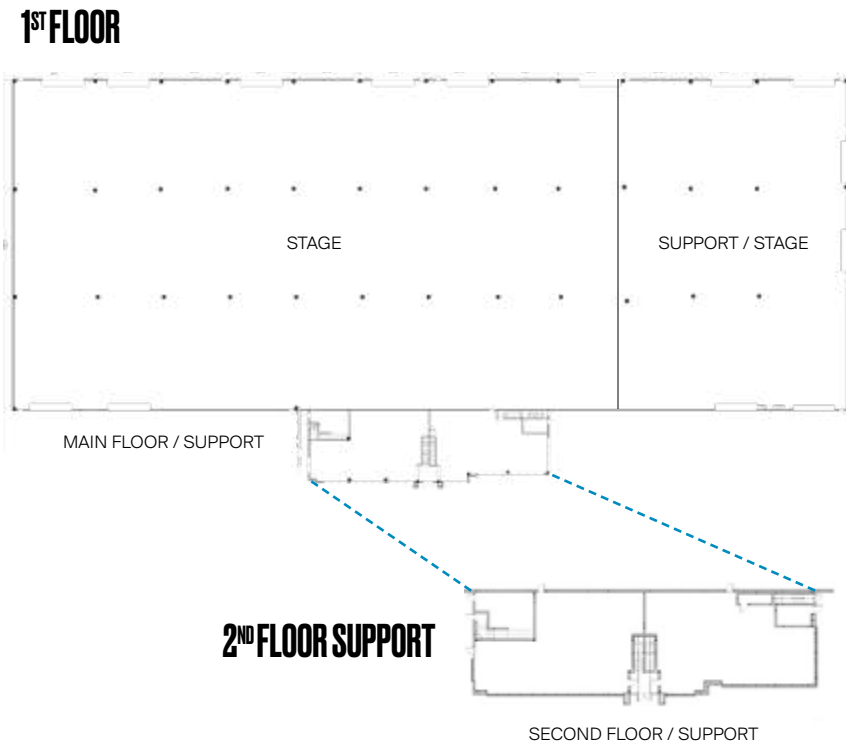
**Ceiling Height:** 28'  
**Stage 1:** 18,500 sq. ft.  
**Stage 2:** 27,500 sq. ft.  
**Stage 3:** 28,000 sq. ft.  
**Stage 4:** 22,500 sq. ft.  
**Main Offices:** 20,400 sq. ft.  
**Lunch:** 4,500 sq. ft.  
**Mill:** 8,300 sq. ft.  
**Paint:** 5,200 sq. ft.  
**Wardrobe:** 3,700 sq. ft.  
**Props A:** 1,500 sq. ft.  
**Props B:** 1,700 sq. ft.  
**Set Dec:** 4,500 sq. ft.  
**Break Down:** 420 sq. ft.





# FORTRESS

Fortress Studio is five minutes away from Fortress+ Support, the Calgary Film Centre, WFW, and a large outdoor green space. It presents Calgary clients with over 95,000 square feet of stage space with a clear height of 36 feet, and 65 feet in column spacing. The facility is on 11.85 acres, and it features drive-through loading, ample parking, and two make-up air systems with 100,000 CFM capacity each.



5616-76 AVENUE SE,  
CALGARY, AB

**Stage:** 71,500 sq. ft.  
**Stage/Support:** 26,000 sq. ft.  
**Main Floor/Support:** 5,800 sq. ft.  
**Second Floor/Support:** 5,800 sq. ft.  
**Total Stage:** 97,500 sq. ft.  
**Total Facility Space:** 109,100 sq. ft.

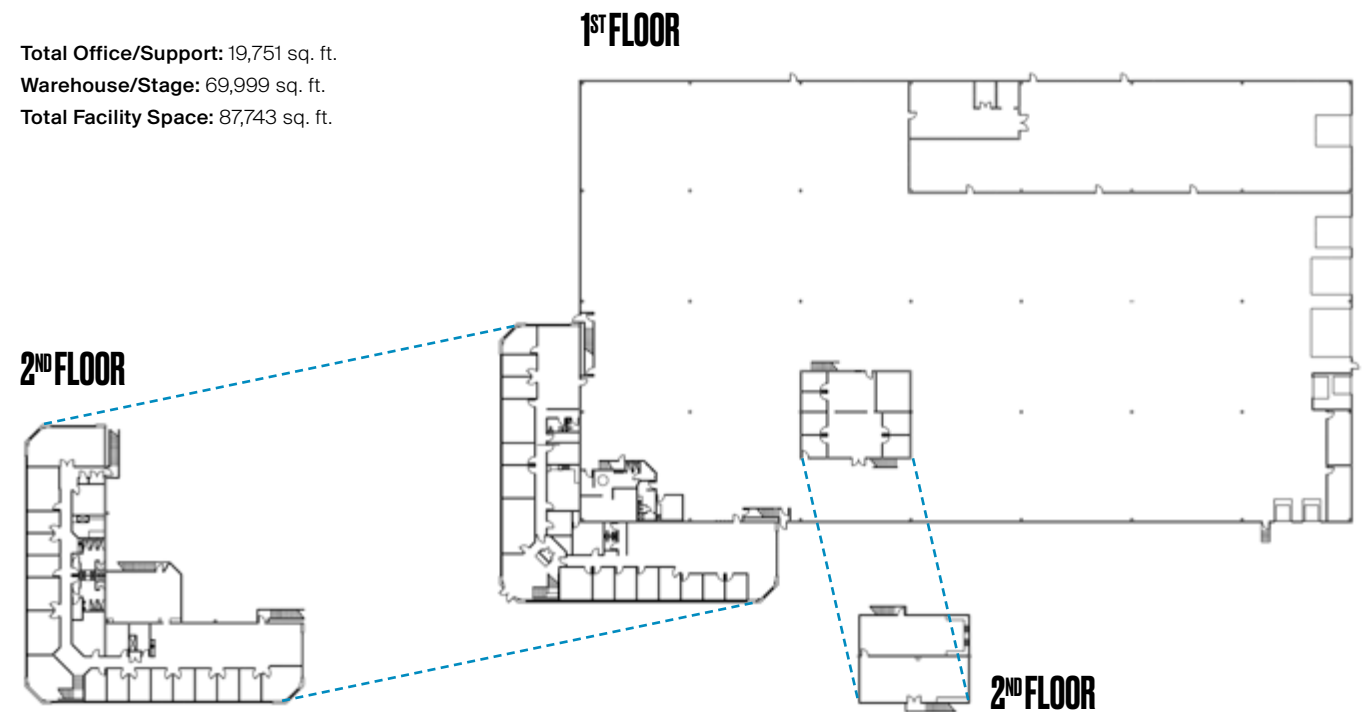
# FORTRESS+

Fortress+ Support is five minutes away from Fortress Studio, the Calgary Film Centre, and WFW. It offers Calgary clients an additional 69,999 square feet of support space with column spacing of 46 feet, and 28 to 29 feet of clear height. The facility also offers almost 20,000 square feet of office space, featuring over 30 private offices, two large boardrooms, open workspaces, a full kitchen, and an additional kitchenette for use.



5616-80 AVENUE SE,  
CALGARY, AB

**Total Office/Support:** 19,751 sq. ft.  
**Warehouse/Stage:** 69,999 sq. ft.  
**Total Facility Space:** 87,743 sq. ft.

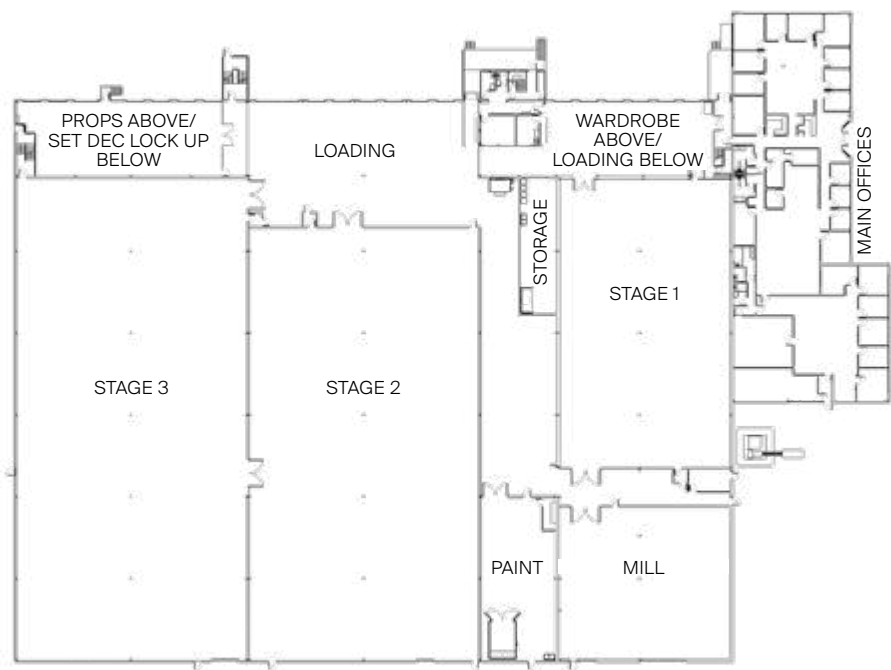




## COPPERWOOD

Copperwood Studio is a full-service facility in Richmond with 106,000 square feet, 31 feet clear height, and 52 feet of column spacing.

The space provides clients with three large, engineered sound stages, mill shop and paint shop, additional support space, along with ample circus and crew parking. All offices are equipped with fibre-optic services and are fully furnished, providing a modern and comfortable turnkey work environment.

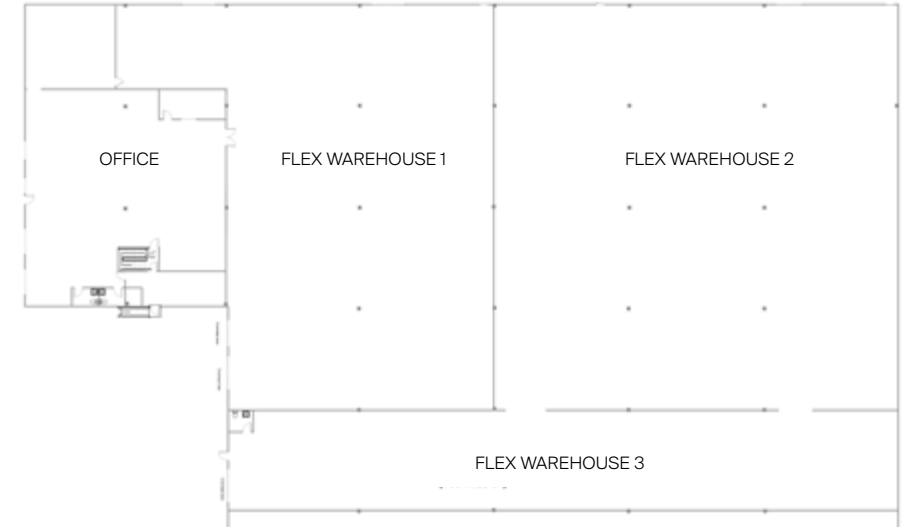


12211 Horseshoe Way,  
Richmond, BC

- Stage 1:** 10,140 sq. ft. (130' x 78')
- Stage 2:** 21,525 sq. ft. (205' x 105')
- Stage 3:** 23,415 sq. ft. (223' x 105')
- Mill:** 5,800 sq. ft.
- Paint:** 2,800 sq. ft.
- Production offices:** 11,580 sq. ft.
- Wardrobe:** 3,977 sq. ft.
- Props:** 3,977 sq. ft.
- Set dec lock-up:** 3,977 sq. ft.

3819 STILL CREEK AVE,  
BURNABY, BC

- Flex 1:** 10,320 sq. ft. (86' x 120')
- Flex 2:** 14,400 sq. ft. (120' x 120')
- Flex 3:** 5,920 sq. ft. (198' x 29'8")
- Office:** 5,631 sq. ft.



## CREEKWOOD

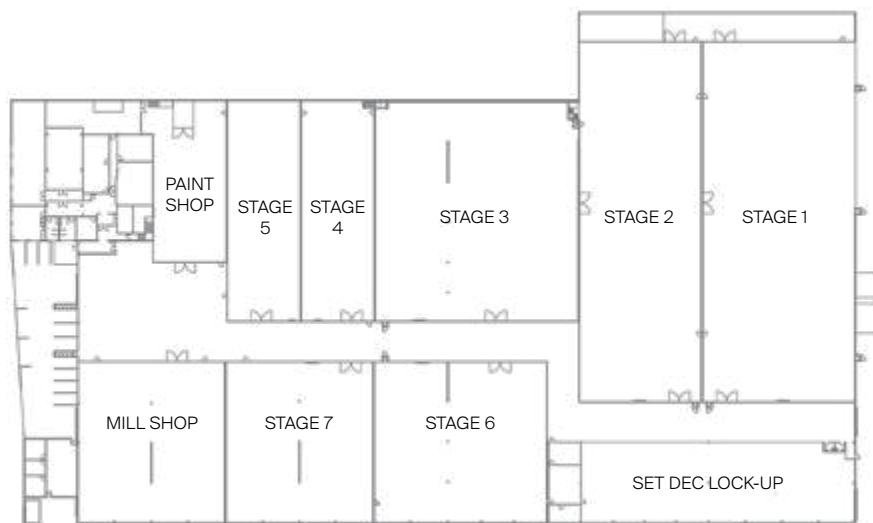
Creekwood Studio is a multipurpose flex space with 36,000 square feet, over 5,500 square feet of office space, 23 feet clear ceiling height, and 45 feet clear span of column spacing.

This property features three dock doors (two docks and one drive up) and 22 designated parking stalls with access to additional parking. The studio is a 40-minute drive to YVR International Airport and only 15 minutes to William F. White International.



# IRONWOOD

Across 177,000 square feet of production-ready space, Ironwood Studio features ceilings of 27 to 31 feet clear height and 25 feet to clear span of column spacing throughout the facility. Ironwood has seven sound stages as well as a mill shop, a paint shop, departmental offices, boardrooms, and script-reading rooms. Ironwood's fully furnished production offices come equipped with 10 GB fibre-optic service. In addition, the sound stages are equipped with state-of-the-art fibre that complements motion capture and VR systems.

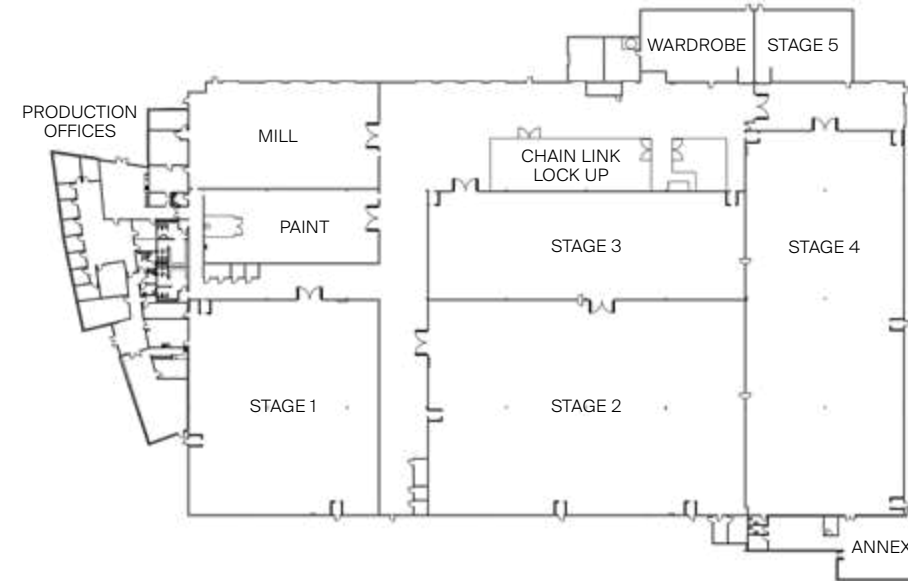


**888 SE MARINE DRIVE,  
VANCOUVER, BC**

- Stage 1:** 24,888 sq. ft. (244' x 102')
- Stage 2:** 20,008 sq. ft. (244' x 82')
- Stage 3:** 20,711 sq. ft. (149' x 139')
- Stage 4:** 7,301 sq. ft. (49' x 149')
- Stage 5:** 7,301 sq. ft. (49' x 149')
- Stage 6:** 12,870 sq. ft. (110' x 117')
- Stage 7:** 10,890 sq. ft. (110' x 99')
- Mill shop:** 10,670 sq. ft. (97' x 110')
- Paint shop:** 5,341 sq. ft. (49' x 109')
- Main offices (2nd floor):** 8,355 sq. ft.
- Lower offices:** 8,355 sq. ft.
- Classroom:** 1,500 sq. ft.
- Set dec lock-up:** 10,000 sq. ft.

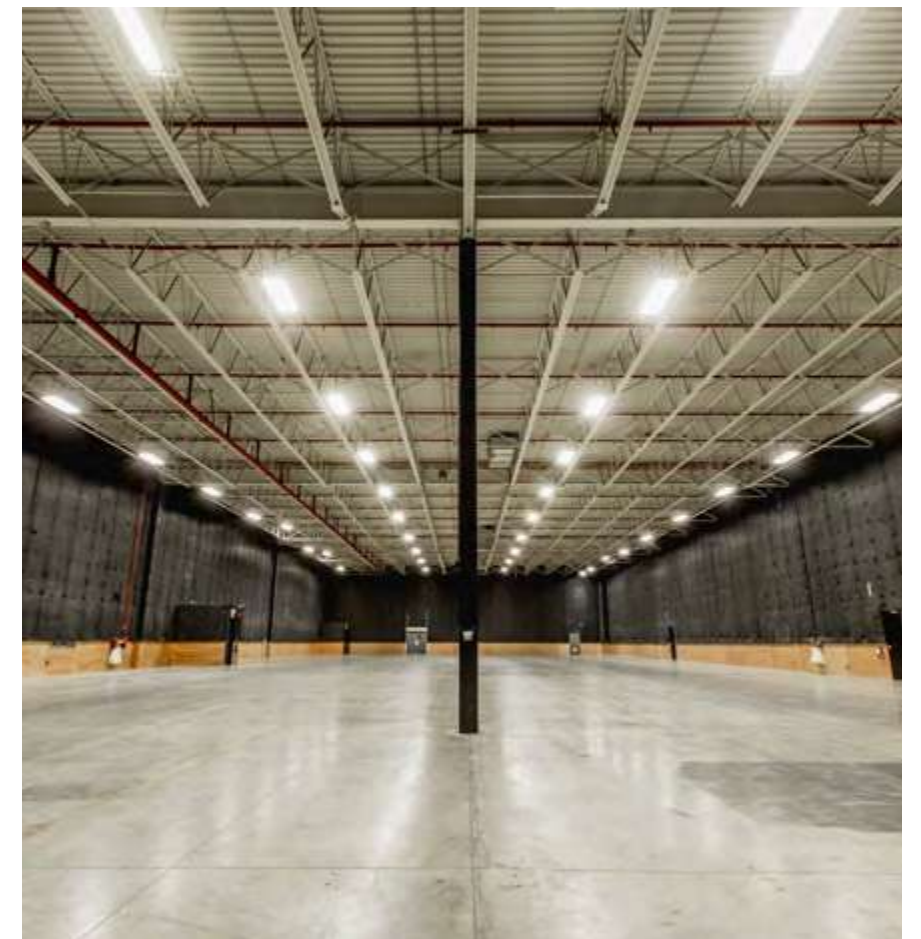
# FRASERWOOD

WFW Studios Fraserwood offers 25 feet clear height ceilings and 45 feet to clear span column spacing, with five sound stages, a mill shop, a paint shop and additional support areas across 119,000 square feet of production-ready space. The studio is located 30 minutes from downtown. Fully furnished production offices with fibre-optic connectivity make for a modern turnkey work environment.



**22031 FRASERWOOD WAY,  
RICHMOND, BC**

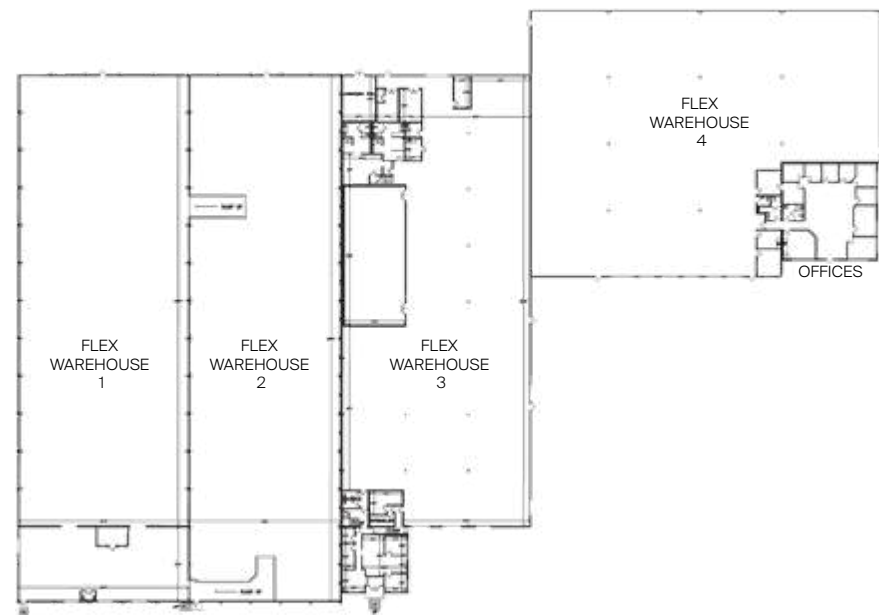
- Stage 1:** 14,760 sq. ft. (120' x 123')
- Stage 2:** 22,263 sq. ft. (181' x 123')
- Stage 3:** 10,860 sq. ft. (181' x 60')
- Stage 4:** 20,700 sq. ft. (90' x 230')
- Stage 5:** 2,350 sq. ft. (55' x 40')
- Mill:** 7,200 sq. ft.
- Paint:** 5,200 sq. ft.
- Production offices:** 9,200 sq. ft.
- Annex:** 3,200 sq. ft.
- Wardrobe:** 2,600 sq. ft.
- Chain link lock-up:** 5,328 sq. ft.



**3690 BAINBRIDGE AVE,  
BURNABY, BC**

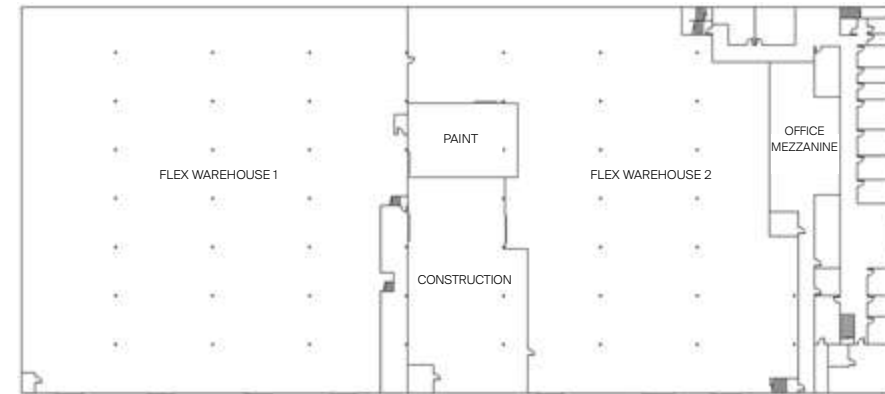
- Flex warehouse 1:** 25,330 sq. ft.
- Flex warehouse 2:** 23,139 sq. ft.
- Flex warehouse 3:** 24,633 sq. ft.
- Flex warehouse 4:** 21,864 sq. ft.
- Offices:** 3,303 sq. ft.

\*The above figures represent the dimensions of each warehouse at its widest point.\*



## LAKWOOD

Lakewood Studio provides clients with 99,750 square feet, complete with four warehouse flex spaces featuring clear heights ranging from 21 to 24 feet, and column spacing between 47 to 90 feet. The location also includes private offices, a boardroom, and a kitchenette.



## RIVERWOOD

Riverwood Studio provides clients with 97,430 square feet, complete with two 20 feet clear height warehouse flex spaces with 50 feet column spacing, an office mezzanine, as well as paint and construction workspaces.

**18788 96 AVE,  
SURREY, BC**

- Flex warehouse 1:** 39,500 sq. ft.
- Flex warehouse 2:** 38,100 sq. ft.
- Paint:** 2,100 sq. ft.
- Construction:** 6,100 sq. ft.
- Office mezzanine:** 12,000 sq. ft.





# WE'VE GOT ALL YOUR BASES COVERED

Since 1963, William F. White International Inc. has equipped Canadian film and television productions with the most comprehensive and technologically-advanced rental inventory in the country.

As Canada's only national equipment provider, we're committed to supporting productions of all kinds: tentpole studio feature films, experimental proof-of-concept web shorts and everything in between.

From state-of-the-art studio spaces to the latest cameras, specialty equipment, lighting, grip, expendables and location support, we maintain all our rentals to the highest possible standards. And we make sure you get what you need, when you need it, with six rental facilities strategically located across the country. WFW Studios also offers management and consulting packages for bundling our services and studio buildouts.

Talk with us today or visit us online at [whites.com](http://whites.com) to see how we can be your partners in production the next time you film in Canada.



# SAY HELLO.

Find us in six locations across Canada.

## VANCOUVER (PST)

100-8363 Lougheed Highway  
Burnaby, BC V5A 1X3  
Hours: Mon-Fri, 8am-5pm PT  
Tel: +1 604 253 5050  
After-hours Emergencies: +1 604 838 2747  
Randall Plitt: rplitt@whites.com

Specialty Equipment—Western Canada  
3555 Bainbridge Avenue  
Burnaby, BC V5A 2T3  
Hours: Mon-Fri, 8am-5pm PT  
Tel: +1 604 428 2144  
Barrie Wells: bwells@whites.com

LES Vancouver  
3975 Kitchener Street  
Burnaby, BC V5C 3L9  
Hours: Mon-Fri, 8am-7pm PT  
Tel: +1 604 436 1418  
Fax: +1 604 436 1461  
Email: wlesvancouver@whites.com  
Jason Cox: jcox@whites.com

## CALGARY (MST)

Calgary Film Centre  
5750 76th Avenue SE, Unit 50  
Calgary, AB T2C 5N5  
Hours: Mon-Fri, 8am-5pm MT  
Tel: +1 403 279 2693  
Rob Rowan: rrowan@whites.com

## WINNIPEG (CST)

11-2073 Logan Avenue  
Winnipeg, MB R2R 0J1  
Hours: Mon-Fri, 8am-5pm CT  
Tel: +1 204 774 7903  
Rob Rowan: rrowan@whites.com

## SUDBURY (EST)

922 Cambrian Heights Drive, Unit 2  
Sudbury, ON P3C 5L8  
Hours: Mon-Fri, 8am-5pm ET  
Tel: +1 705 885 1242  
Josh Desormeaux: jdesormeaux@whites.com

## TORONTO (EST)

800 Islington Avenue  
Toronto, ON M8Z 6A1  
Hours: Mon-Fri, 8am-5pm ET  
Tel: +1 416 239 5050  
After-hours Emergencies: +1 647 222 0454  
Michael Drabot: mdrabot@whites.com

Camera  
Hours: Mon-Fri, 8am-6pm ET  
After-hours Emergencies: +1 416 522 4285  
Trevor Huys: thuys@whites.com

LES Toronto  
Hours: Mon-Fri, 7:30am-5:30pm ET  
Tel: +1 416 410 5858  
Email: wlestoronto@whites.com  
Paul Potvin: ppotvin@whites.com

The Store @ WFW (Expendables)  
Hours: Mon-Fri, 8am-5pm ET  
thestore@whites.com

## HALIFAX (AST)

315 Wilkinson Avenue  
Dartmouth, NS B3B 0M6  
Hours: Mon-Fri, 8am-5pm AT  
Tel: +1 902 450 1284  
Trevor Sutherland: tsutherland@whites.com

whites.com  
whitesstudios.com  
whitesles.com

