



# CREEKWOOD STUDIO

Creekwood Studio is a multipurpose flex space with 36,000 square feet including 5,600 square feet of office space. It features 23 feet clear ceiling height and 45 feet clear span of column spacing. This property includes three dock doors (two docks and one drive up) and 22 designated parking stalls with access to additional parking. The studio is a 40-minute drive to YVR International Airport and only 15 minutes to William F. White International.





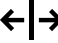


 3819 Still Creek Avenue, Burnaby, BC

[View on Map](#)

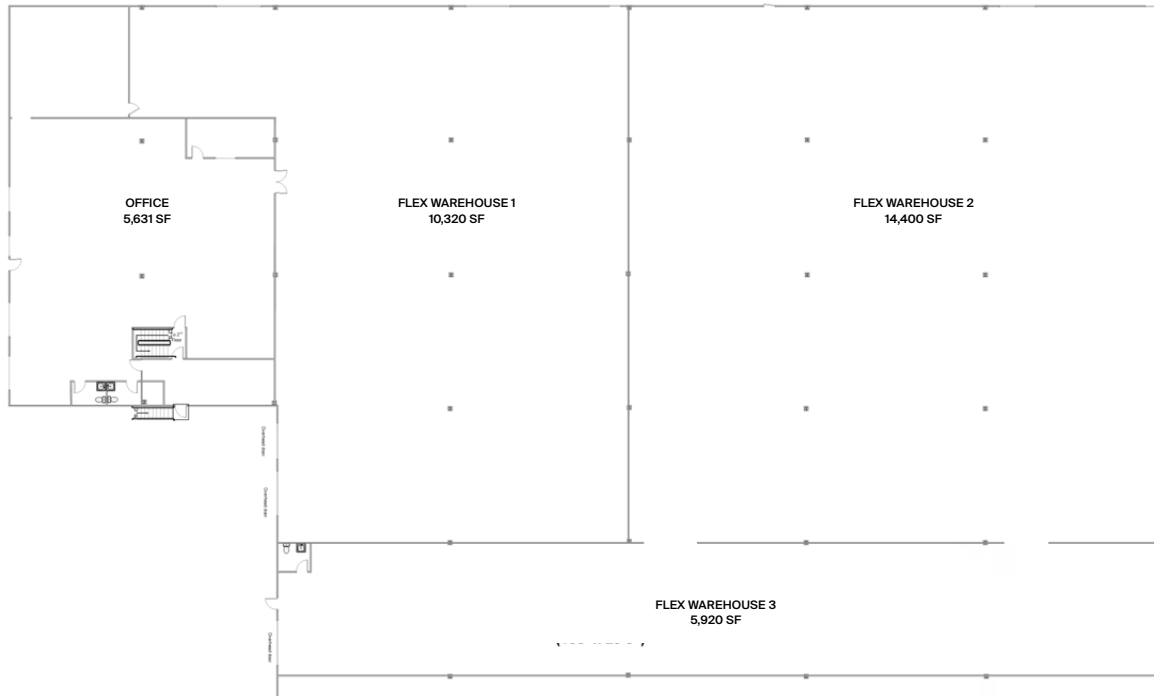
## HIGHLIGHTS

- 5 private offices
- 3 loading bay docks
- Large meeting room
- Small kitchenette
- Close proximity to public transit

## FEATURES

-  27 Parking Spots
-  23' Ceiling Height
-  45' Column Spacing
-  1,800 Amps
-  **Nearby:**
  - 15 min from WFW
  - 20 min from Downtown Vancouver
  - 20 min from WFW Ironwood Studio
  - 25 min from WFW Fraserwood Studio
  - 33 min from WFW Copperwood Studio
  - 40 min from YVR International Airport

# FLOOR PLAN



## BUILDING SPECS

Flex 1:	10,320 sq. ft.
Flex 2:	14,400 sq. ft.
Flex 3:	5,920 sq. ft.
<b>Total Stage Space:</b>	<b>30,640 sq. ft.</b>
Office:	5,631 sq. ft.
<b>Total Support Space:</b>	<b>5,631 sq. ft.</b>
<b>Total Facility Space:</b>	<b>36,271 sq. ft.</b>

