



EDWARDS STUDIO

Edwards Studio offers 151,130 square feet of production-ready space, with 40 feet in column spacing in the stages, and 28 feet clear height throughout the building. Edwards Studio houses four sound stages, as well as a mill shop, paint shop, two floors of departmental offices, and ample storage space.





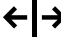

 6115 Edwards Blvd, Mississauga, ON


[View on Map](#)

HIGHLIGHTS

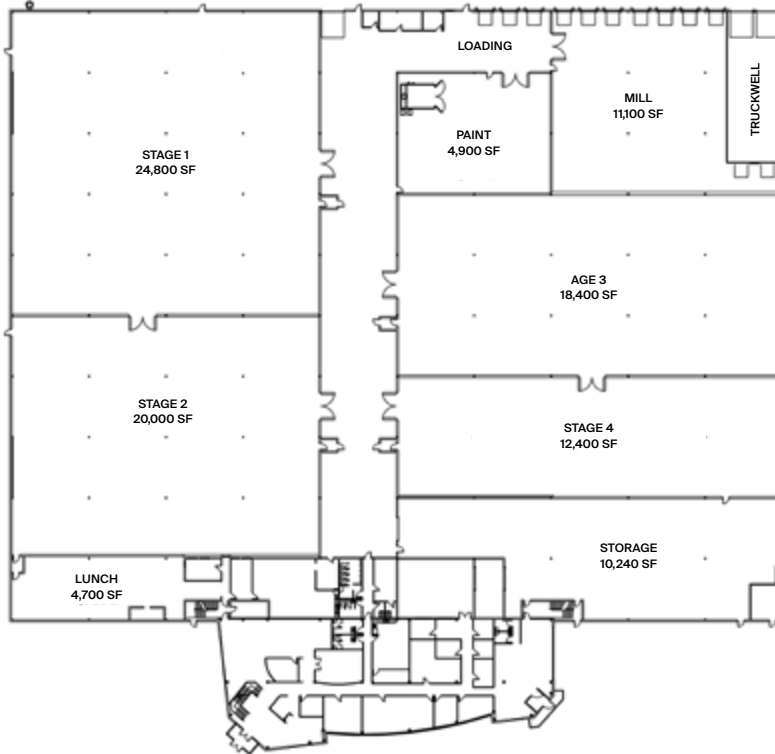
- Production office with IP phones
- 10 GB fire-optic service
- 3 Kitchens complete with fridge and dishwasher
- Full-service paint shop, complete with paint spray booth
- Mill shop
- Set decoration and props lockups

FEATURES

-  100 Parking Spots
-  28' Ceiling Height
-  40' Column Spacing
-  3,600 Amps

-  **Nearby:**
 - 7 mins from WFW Legacy Studio
 - 7 mins from WFW Heritage Studio
 - 10 mins from CBS Stages
 - 15 mins from WFW Century Studio
 - 20 mins from WFW
 - 30 mins from Downtown Toronto

FLOOR PLAN



BUILDING SPECS

Stage 1:	24,800 sq. ft.
Stage 2:	20,000 sq. ft.
Stage 3:	18,400 sq. ft.
Stage 4:	12,400 sq. ft.
Total Flex Space:	65,600 sq. ft.
Paint Shop:	4,900 sq. ft.
Mill Shop:	11,100 sq. ft.
Production Offices:	21,545 sq. ft.
Storage:	10,240 sq. ft.
Lunch:	4,700 sq. ft.
Total Support Space:	52,485 sq. ft.
Total Facility Space:	118,085 sq. ft.

