



LAKWOOD STUDIO

Lakewood Studio provides clients with 99,750 square feet, complete with four warehouse flex spaces featuring clear heights ranging from 21 to 24 feet, and column spacing between 47 to 90 feet. The location also includes private offices, a boardroom, and a kitchenette.





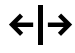


 3690 Bainbridge Avenue, Burnaby, BC

[View on Map](#)

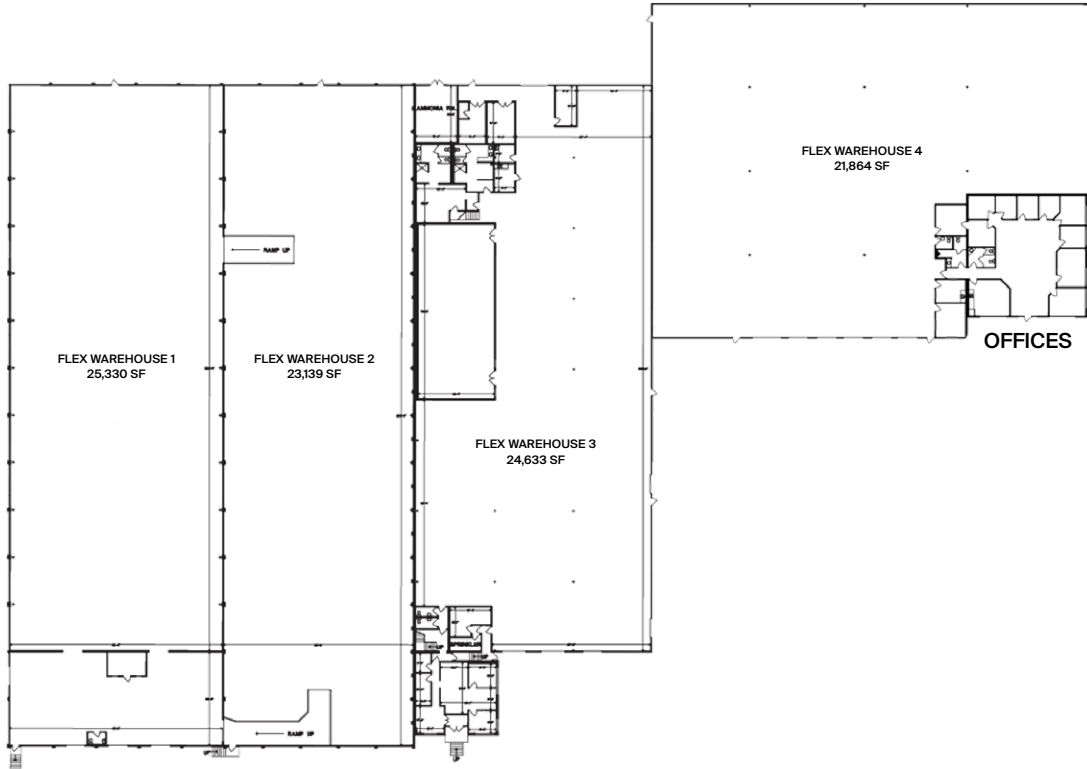
HIGHLIGHTS

- Mill shop
- 2 kitchens complete with fridges and dishwasher
- 11 private offices
- Set decoration and props lockups available
- Lunch room and serving room
- Multiple loading bays
- Close proximity to public transit

FEATURES

-  100 Parking Spots
-  22' Ceiling Height
-  90' Column Spacing
-  2,200 Amps
-  **Nearby:**
 - 10 minutes from WFW
 - 20 mins from WFW Fraserwood Studio
 - 20 mins from WFW Ironwood Studio
 - 30 mins from WFW Copperwood Studio
 - 30 mins from Downtown Vancouver
 - 40 mins from YVR International Airport

FLOOR PLAN



BUILDING SPECS

Flex Warehouse 1:	25,330 sq.ft.
Flex Warehouse 2:	23,139 sq.ft.
Flex Warehouse 3:	24,633 sq.ft.
Flex Warehouse 4:	21,864 sq.ft.
Total Flex Space:	94,966 sq.ft.
Offices:	3,303 sq.ft.
Total Space:	98,269 sq.ft.

*The above figures represent the dimensions of each warehouse at its widest point.

